

Community Impact Report

Fiscal Year 2024-25





To Our Community

As President of the Boone County Public Library (BCPL) Board, I am honored to present this year's Community Impact Report. Since voters established the library district in 1973, BCPL has grown from one temporary location in Florence into a six-location system serving Burlington, Florence, Hebron, Petersburg, Union and Walton. The opening of the Walton Branch in September 2024 marked a major milestone in expanding equitable access to library services. This newest location offers full programming, diverse gathering spaces and opportunities for lifelong learning.

"In the year ahead, I am especially focused on elevating the Florence Branch, our system's original home and a cornerstone of library service."

Under the leadership of Executive Director Carrie Herrmann and her dedicated staff, BCPL continues to thrive welcoming more than one million visitors annually and reaching even more through digital services, outreach vehicles and the Archive and History Center. Our FY2024–2027 Strategic Plan focuses on Services, Spaces and Staff, ensuring that programs ranging from early literacy and STEAM to genealogy and civic engagement meet evolving community needs.

Looking Ahead as Board President:

In the year ahead, I am especially focused on elevating the Florence Branch, our system's original home and a cornerstone of library service. We will strengthen partnerships with area schools, civic groups and local businesses; expand programs that reflect Florence's diverse interests; and improve accessibility and wayfinding for all visitors. We will also increase engagement across all six locations through cross-branch programming, responsive scheduling and enhanced outreach.

This report showcases our progress and reaffirms our commitment to a welcoming, well-used library system where every location serves as a hub for learning, connection and belonging. Thank you for your continued support and engagement.

Sincerely,
Dr. Eric Jackson

Dr. Eric R. Jackson



"Your support inspires us to keep growing and innovating so the Library remains a welcoming place for all."

Celebrating Our Community, Together

At Boone County Public Library, our mission—Discover, Explore, Experience a lifetime of learning—guides everything we do. Whether you visit us to find a good book, attend a program, or use our spaces and technology, our goal is to enrich lives and strengthen our community.

This past year brought exciting milestones. We celebrated the grand opening of the new Walton Branch, a space that has quickly become a vibrant hub for learning and connection. Early literacy also remains at the heart of our work; nearly half of Boone County's eligible children now receive free monthly books through Dolly Parton's Imagination Library, thanks to our strong community partnerships. We also welcomed local high school interns, earned grants to support literacy and history initiatives, and continued preserving Boone County's historic records for future generations.

These achievements reflect the dedication of our staff, the support of our partners, and most importantly, the trust you place in us. Your engagement inspires us to keep growing and innovating so that the Library remains a welcoming place for all.

Thank you for being a part of our story. Together, we are building a stronger, more connected community.

Warmly,
Carrie Herrmann

Carrie A. Herrmann

2024-25

**BOARD OF
DIRECTORS**



AT A GLANCE



135,538
Library Cardholders



445,967

Customer Visits

3,386

Curbside/Drive-thru Visits

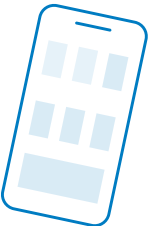


359,608

Physical Items Collection

853,742

Physical Items Borrowed



543,352

Digital Items Borrowed

102,384

Database Usage



908,248

Website Visits

161,245

App Usage



15,959

Meeting & Study Room
Reservations

1,996

Sensory Room Visitors
(497.75 hours)



47,830

Computer Usage

159,348

Wifi Usage

OUR MISSION

Discover, explore, experience
a lifetime of learning at
Boone County Public Library.

OUR VISION

A Library that provides
learning opportunities for the
community to be empowered
and to enrich their lives.

OUR PURPOSE

To provide our community
with continuing access to
opportunities for learning,
growth and empowerment.

SUMMER READING

The Summer Reading program encourages readers of all ages to explore books, participate in fun activities and engage with our community.

Designed to help prevent the *summer slide*, the program boosts literacy skills, promotes a love of reading and fosters family involvement through interactive storytimes, programs and community events. Participants earn incentives for their reading achievements, making learning enjoyable and rewarding. The Summer Reading program is a partnership between Boone County Public Library, Boone County Parks & Recreation and Boone County Schools.



5,337
Participants



567

Kick-off Attendees

YOUTH



53,380
Books Logged



2,437,666
Minutes Read

ADULT



18,034
Books Logged



23,173
Badges Earned

*Most Logged Activity:
Work up a sweat taking a
walk outside



Thank You to Our Prize Donors: Burlington Fire House & Snappy Tomato Pizza

YOUTH SERVICES

Early Literacy: Storytimes and More

Supporting parents with tools like 1000 Books Before Kindergarten and hosting nearly 900 storytimes, the early literacy team focused on building strong foundations for learning and literacy before children start school. Strengthened partnerships, strategic program adjustments, new outreach efforts, and targeted training for staff helped more Boone County families access high-quality early learning experiences.



879
Storytimes
14,580
Attendees

"I love learning new songs and getting ideas of what to focus on. It's hard to sometimes know what's developmentally appropriate, and storytimes help."

-- Storytime Parent



Early Childhood Fair
408
Attendees



Ages and Stages
Questionnaires (ASQs)
45
Screenings



53,110 Books Mailed

5,668
Children Enrolled

\$0
Cost to Boone County
Families



Scan the QR Code
to sign up your child!

Dolly Parton's Imagination Library

The Imagination Library provides free, high-quality, age-appropriate books for children from birth to age five, delivering a new book directly to their homes each month that helps build family libraries and nurture early literacy skills for lifelong learning. This is made possible through the generous support of the partnership between Dolly Parton's Imagination Library, Boone County Public Library, Boone County Public Library Foundation, Boone County School District, and Walton-Verona Independent School District.

1000 Books Before Kindergarten

Whether they read one book 1000 times or 1000 different books, young readers earn milestone badges and prizes as they work toward their goals. By encouraging a reading habit, this program assists Boone County families in preparing their children (from birth to the start of kindergarten) for future school and life success. Upon completion of the program, readers are celebrated with their names in a place of honor on the 1000 Books board at every full-service BCPL location.

126,591 Books Logged

990
Active Readers

65
Program
Completions



Music Garden and StoryWalk®

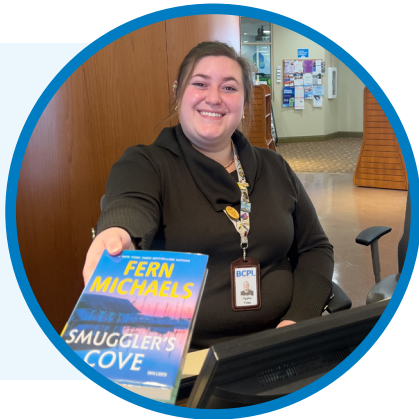
Our new outdoor Music Garden at the Hebron Branch invites children and families to explore sound and rhythm through hands-on play. This interactive space encourages creativity, coordination and learning in a natural setting. It pairs beautifully with our StoryWalk®, which combines a love of reading with the benefits of outdoor activity, encouraging families to enjoy stories while walking through nature. Together, they promote literacy, movement and community connection.

ADULT SERVICES

What We Do

Adult Services connected Boone County residents with opportunities to learn, connect and thrive through engaging events, cultural programs and hands-on experiences. Programs and conversations encouraged discovery, while the Boone Innovation Lab (BIL) promoted creativity through accessible technology. The department also addressed practical needs by providing essential services such as passport execution, notary assistance, GED testing and technology training ensuring residents have the tools to support education, travel and personal growth. In addition, the restoration and installation of artwork across library branches celebrated Boone County's natural beauty and history, helping preserve the community's story for future generations.

308,483
Reference Questions



1,086

Passports



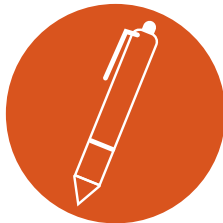
51

GED Tests



3,018

BIL Appointments



2,098

Notaries

The Curt Bessette Art Gallery

The Art Gallery provides a welcoming space for local artists to share their creativity with the community at no cost. By offering free exhibit opportunities with the option to sell their work, the gallery supports artistic expression and strengthens the connection between art and the community. (Pictured Artwork by Robert Sankner)



OUTREACH

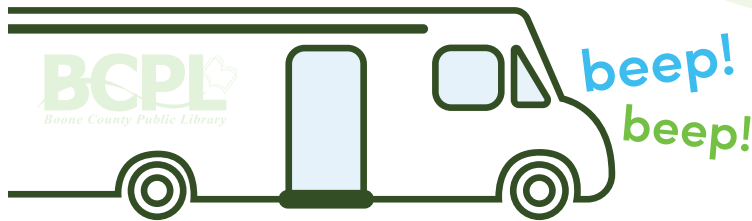
What We Do

Ensuring access to library services across Boone County, the outreach team brought materials and programs directly to the community. The Library Bus delivered storytimes and books to early learning settings, while the Library Bus and the Mobile BIL served children and families at community stops and special events with books, activities and technology. The Mobile BIL also engaged all ages through classroom and community visits, highlighting makerspace tools available at BCPL. Adults were supported through front-door deliveries and monthly visits to congregate living communities.

1,234
Off-site Programs

19,778
Attendees

80
Mobile BIL Programs



149

Library Bus Visits

7,836

Served

52

Community Stops

1,063

Served

13,066

Outreach Items Circulated

320

Home Deliveries

PROGRAMMING



Youth Programming

The youth programming team created engaging opportunities for children, teens and families to learn, connect and grow. From hands-on STEM activities to puppet shows, the department fostered creativity and strengthened literacy skills while building a lifelong love of reading. The addition of 106 passive programs, such as scavenger hunts and discovery stations, further expanded opportunities for the youth to participate at their own pace.

67
Community
Presenters

40
Therapy Dog
Programs

Adult Programming

The adult programming team had an exciting year of community engagement, lifelong learning opportunities and innovative services. From thought-provoking author events to hands-on technology training, the department worked to provide diverse programming that connects Boone County residents to knowledge, culture and creativity.

26
Concerts

86
Book Group
Meetings

"This was so cool. I walked in to hear a 'Phantom of the Opera' medley. The whole concert was very good and entertaining. Seven accordion players accompanied by other musicians."

-- Lise, BCPL Patron

12,666
Attendees



17,911
Attendees

"I love the library programs and how welcoming the staff always are. We typically come once a week and the library has given me great memories with my daughter."

-- Parent

Pictured left to right: Family Yoga, My Nose Turns Red Youth Circus, Author Frank X. Walker, April Intrigue Winner, Everly Brothers Tribute Band



WALTON BRANCH GRAND OPENING

New Location Opens

The Walton Branch opened in September 2024 as BCPL's newest community hub, designed with both innovation and inclusivity at its core.

Outdoors, visitors enjoy landscaped courtyards, picnic spaces and a natural amphitheater. Inside, the Boone Innovation Lab (BIL) focuses on fiber and fabric arts, featuring a long-arm quilting machine. A fully inclusive, sensory-friendly restroom ensures that every patron can visit with dignity and comfort, while the Family Activity Center supports early literacy through play-based learning. With a cozy fireplace, a demonstration kitchen, and computer stations equipped with built-in play areas, the branch is both welcoming and practical. Sustainability was central to the design, with geothermal energy, rooftop solar panels and EV charging stations.



42,000

Items in Initial Collection
(43% larger than prior Walton Branch)

"Love the huge windows, variety of seating options, 'quiet rooms', outdoor seating, tables with outlets and charging ports, and a fireplace."

--Chrissy, BCPL Patron



EV Charging Stations
(library cardholders enjoy a discounted rate)



Inclusive Restroom
(sensory-friendly, adult-sized changing table)



Boone Innovation Lab
(fiber and fabric arts focus)



Outdoor Spaces
(courtyard and picnic/seating areas)

50TH ANNIVERSARY

BCPL Turns 50!

In October 2024, BCPL proudly celebrated 50 years of service to Boone County with a month-long campaign that honored our history, highlighted our current offerings and looked ahead to the future. The celebration brought together founding members, longtime patrons and new visitors through programs, displays, concerts, art projects and a special anniversary reading challenge. A retro theme tied the campaign together across newsletters, social media and in-person events, creating a sense of fun and nostalgia that resonated across generations. Beyond the public festivities, the anniversary also created meaningful staff connections, culminating in one of the most engaging and unifying Staff Development Days in recent years.

More than just a milestone, the 50th anniversary reaffirmed BCPL's role as a cornerstone of the community and set the stage for the next 50 years of innovation and service.



Ginny Kohl, 1976 Library Board Vice Chairman



Jane Smith, Boone County Public Library's First Librarian



BCPL Staff Development Day, 2024

"The energy and positive attitude of this year's Staff Development Day truly reflected the excitement of our 50th anniversary."

-- Janelle, BCPL Staff



Community Engagement

97% increase in Reading Challenge participation, with 4,205 badges earned and 3,710 activities completed

100% of newsletters claimed within two weeks

94% increase in blog readership during the anniversary campaign

3 community speaking engagements featuring BCPL leadership and founding members

7 -part video series documenting BCPL's history and future vision available on YouTube



FINANCIALS

Community Investment

BCPL is funded primarily by the people it serves; 94% of our revenue comes directly from local taxes, with no operational funding from county or state government. Because our community invests so strongly in its library, we encourage all residents to make full use of the services, resources and spaces their tax dollars support. Grants, e-rate funds and occasional property sales make up the remaining portion of our budget.

\$11,337,681 In Revenue

Includes the sale of two pieces of property: Old Walton Branch and 3 acres in Hebron.

\$10,031,080
Local Government

Average home in Boone County
(value \$237,600) paid \$97.42

\$0
State Government

\$43,380
Federal Government

Includes grants and e-rate

\$1,263,221
Other

Includes property sale, vending
and grants from nonprofit
organizations



\$13,367,866 In Expenditures

Includes partial construction of the Walton Branch, which was pulled from capital funds.

\$1,220,721
Collection

Includes books, audio visuals, digital
resources, magazines and more

\$1,868,962
Other Operations

Includes operational and
program supplies

\$8,242,395
Staff

Includes salaries, benefits, tuition and
student loan assistance, retirement
and continuing education

\$2,035,788
Capital

Includes design work and
construction of the
Walton Branch



FOUNDATION

Thank You to Our Donors & Funders

Kimberly & Mark Arnett
Jimmy Beach
Robin Bennett
Bramel & Ackley, PSC
Eleni Caddell
Linny Cloyd
Anthony & Don Davern
Hillary Delaney
Anthony W. & Candace B. Frohlich
Gavin J. Frohlich
Kenneth & Sara Frohlich
Matthew & Jesslyn Frohlich
Spencer Z. Frohlich
Michael A. Helmig
Les Hill
Peggy Kennedy
Michael Kirkwood, MD
Carol Whitson Kirkwood
Greg Larison
Gary Lee Peace
Patrick Raverty
Philip Ridgell
Eric & Martine Rose
Tony Schmidt
Matthew Smith
Stephen R. Wilmhoff
Philip & Patricia Yannarella
Rob Ziegler
Robert & Nancy Zapp

Trivia Fundraiser Sponsors:
Bramel & Ackley, PSC
Shepherd Insurance
Duke Energy
Owen Electric
ZHCx
St. Elizabeth Healthcare

We apologize for any
omissions and welcome
corrections to ensure
all donors are properly
recognized.

BCPL Foundation

The Boone County Public Library Foundation is a 501(c)(3) nonprofit that strengthens the Library beyond the limits of public funding. Through charitable and educational support, the Foundation enhances collections, programs and services that advance 21st-century skills, expand access to technology, encourage social connection and support workforce readiness. Together, these efforts position the Library as a vital community anchor that promotes lifelong learning and enriches Boone County's educational, civic and cultural life.

Support the Library's Future

Your tax deductible donation to the Foundation strengthens literacy, expands access to technology, preserves local history and helps ensure the Library serves our community for generations.



Scan the QR Code to donate!

There are many ways to give:

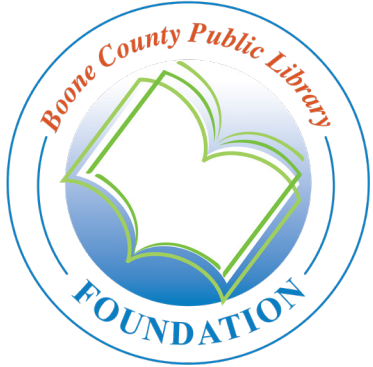
Online: Donate securely through PayPal
By Mail: Send a check to the Foundation
1786 Burlington Pike, Burlington KY 41005

Community Programs: Give through the Horizon Community Fund or Kroger Community Rewards

Other: Multiply your impact through gifts of stock, donor-advised funds or qualified charitable distributions, honorarium or memorial gifts, or create a lasting legacy through a planned gift.

To learn more or discuss a gift that aligns with your philanthropic goals, please contact:

Carrie Herrmann, Executive Director
859-292-3387 | cherrman@bcpl.org



1
Early Childhood
Literacy and Dolly
Parton's Imagination
Library

2
Boone County
Public Library's
Archive & History
Center

3
Capital Projects

4
General

"Our Foundation works
to expand services for all
members of our community."
-- Patrick, Foundation President

2024-25 FOUNDATION BOARD OF DIRECTORS

Patrick Raverty, President
Pamela Goetting, Vice President

Jim Henning, Treasurer
Eric W. Richardson, Secretary

Lawrence Rosenthal
Barbara Hill



1786 Burlington Pike
Burlington, Kentucky 41005

Nonprofit
U.S. Postage
PAID
Florence, KY
Permit No. 50



MAIN LIBRARY

1786 Burlington Pike
Burlington, KY 41005



SCHEBEN BRANCH

8899 US 42
Union, KY 41091



HEBRON BRANCH

1863 North Bend Rd
Hebron, KY 41048



WALTON BRANCH

13000 Towne Center Dr
Walton, KY 41094



FLORENCE BRANCH

7425 US 42
Florence, KY 41042



CHAPIN MEMORIAL LIBRARY

6517 Market St
Petersburg, KY 41080

CONTACT

859-342-2665 (BOOK)
bcpl.org

FOLLOW

@boonelibrary



DIGITAL NEWSLETTER

