

discover

Boone County Public Library

Get ready to travel with A New Passport from BCPL

Boone County Public Library - Scheben Branch is an official passport application acceptance facility for **NEW** passports, making it easier than ever to prepare for your next trip. Our trained staff can accept and verify your completed application, confirm required documents and securely submit everything to the U.S. Department of State. We're here to help you get started!

Applying for a **new passport** at the Scheben Branch is **by appointment only**.

- Check eligibility at bcpl.org/passports.
- If eligible, schedule an in-person appointment online or call the Scheben Branch at **859-342-2665 Ext. 2**. We welcome questions prior to your appointment!

Passport Acceptance Fair

Scheben Branch in Union
Saturday, February 7, 9 a.m.-3 p.m.

For one day only, skip the appointment and attend our Passport Acceptance Fair. Certified Passport Acceptance Agents will be available to help you apply for a U.S. passport. Applications will be executed on a **first-come, first-served** basis.

This event is for **new passports only**; adult renewals cannot be processed.

For more information:

Call 859-342-2665 ext. 2
or visit bcpl.org/passports.

BCPL
Boone County Public Library



Get this
newsletter
in the mail!

Visit bcpl.org and go to Events.
Click on "View Newsletters"
and fill out the Newsletter
by Mail form.

explore events & workshops for ADULTS

REGISTER FOR LIBRARY EVENTS

Go to bcpl.org and locate your program in the Library's event calendar or call 859-342-BOOK (2665) and select the appropriate location. All registrations will close one hour prior to the event unless otherwise noted.

Weekly Programs

Yoga for Healthy Weight
Mondays
Main Library, 6 p.m.

Wednesdays
Hebron Branch, 6 p.m.

Thursdays
Scheben Branch, 6 p.m.

Bring a yoga mat. \$30 monthly. Register at 859-334-2117.

Easy English Group
Wednesdays
Florence Branch, noon
Improve your English reading and speaking skills. All levels welcome.

Chair Yoga
Thursdays
Walton Branch, 2 p.m.
Relax with gentle movements.

Mini Displays

African Americans of Boone County
Main Library
Stories of courage and strength.

A Potted Oasis
Scheben Branch
Collection of indoor plants.

President's Memorabilia
Walton Branch
Memorabilia from Karin Shelton.

Community Resources
Florence Branch
Resources available in our community.

United Way Free Tax Prep: Drop-off Service
Mondays through March 30
Florence Branch, 5-6 p.m.

Get help with your taxes with trained and certified volunteers. Check with www.uwgc.org/find-help/free-tax-prep/ or call 2-1-1 for more information. No appointments necessary.

Take and Make: I Found a Quilted Heart
Monday, February 2
Walton Branch
Pick up a kit to create a quilted heart and share the love, while supplies last.



Library Trustee Informational Meeting
Monday, February 2
Main Library, 4-5 p.m.

BCPL's Board of Trustees is accepting applications for volunteer board positions that begin July 2026. Applicants should be dedicated individuals who have a passion for libraries and the ability to effectively advocate for them. Interested individuals must attend this meeting.

BIL: Bird Deterrent Decals
Monday, February 2
Hebron Branch, 6 p.m.
Using the Cricut, create cut-out window decals that help prevent birds from flying into glass.

Simple Solutions for Aging in Place
Tuesday, February 3
Main Library, 6:30 p.m.
Discover practical strategies that promote safety and support confident independent living. Presented by AARP.

Line Dancing
Wednesday, February 4
Scheben Branch, 6:30 p.m.

Saturday, February 14
Walton Branch, 10:30 a.m.
Get fit, have fun and learn several beginner-friendly line dances. Please register.



Call the Community Events Liaison at 859-292-3393 at least one week in advance if special accommodations are needed.



Sip and See? Try Some Tea!
Thursday, February 5
Florence Branch, 6:30 p.m.
Taste rare and hard-to-find teas, explore unique flavors and origins, and learn brewing techniques for the perfect cup at home. Presented by Wendigo Tea. Please register.

Zumba-Fit
Saturdays, February 7 and 21
Hebron Branch, 9:30 a.m.
Try a nonstop, medium to high-intensity dance workout combining MixedFit and Zumba.

Passport Acceptance Fair
Saturday, February 7
Scheben Branch, 9 a.m.-3 p.m.
See front cover.

Superb Owl
Saturday, February 7
Florence Branch, 2 p.m.
Watch a live cam of these nocturnal creatures while making your own papercraft bird.

Spice Taste Testing
Saturday, February 7
Walton Branch, 3:30 p.m.
Try out staple spices and herbs from around the world. Pair varieties of cinnamon with a neutral white bread for tasting. A gluten-free option is available.

Take and Make: Valentine Puzzle Purse
Monday, February 9
Florence Branch
Pick up a kit and discover Victorian courtship traditions as you create your own keepsake, while supplies last.

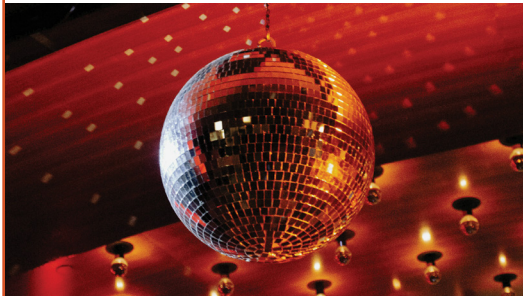
BIL: Embroidered Magnets
Monday-Thursday, February 9-12
Walton Branch, 3-7 p.m.
Using select designs, create a fancy felt magnet. Please register.

Romantasy Party!
Tuesday, February 10
Florence Branch, 6 p.m.
Dress in your most whimsical attire and bring your fantasies to life as you craft your own princess hat and bookmark. Please register.



Writers Group
Tuesday, February 10
Main Library, 7 p.m.
Share your work for feedback. Email asnow@bcpl.org with guideline questions.

Board Game Swap
Wednesday, February 11
Main Library, 11 a.m.-2 p.m.
Swap a game you are feeling "board" with. Bring a game, take a game.



Beginner's Ballroom Dancing
Wednesday, February 11
Scheben Branch, 6:30 p.m.
Learn the fundamentals of ballroom dance with simple steps and guided practice. Please register.

Valentine Puzzle Wreath
Thursday, February 12
Main Library, 2 p.m.
Create and personalize a festive wreath using puzzle pieces.

Bingo!
Thursday, February 12
Walton Branch, 6-7:30 p.m.
Drop in to try your luck and win some prizes!

Tech Help Drop-in
Tuesday, February 17
Main Library, 10 a.m.-noon and 2-4 p.m.
Get one-on-one assistance with your device. A UK extension volunteer will be available to answer questions and provide basic troubleshooting. Please register for a 20-minute time slot.

Herbal Heating Pad
Tuesday, February 17
Walton Branch, 6 p.m.
Make an aromatherapy warmer.

Midweek Mahjongg
Wednesday, February 18
Walton Branch, 4-7 p.m.
Drop in and take a midweek break. All levels welcome.

Hanging Bird Feeder
Wednesday, February 18
Hebron Branch, 6:30 p.m.
Decorate and glue a mug to a saucer to construct a simple backyard feeder for wild birds.



Trivia Night
Wednesday, February 18
Main Library, 6:30 p.m.
Play trivia just for fun! Bring your own team or we'll put one together for you.

Self-Defense for Beginners
Thursday, February 19
Walton Branch, 6 p.m.
Learn basic strategies and maneuvers for self-defense. Please register.

The Oddity Hour
Thursday, February 19
Florence Branch, 6:30 p.m.
Embrace the season of love by creating your own decorative love potion bottle. Please register.

Comfort Quilts
Monday, February 23
Main Library, 9:30 a.m.-2:30 p.m.
Sew quilts for community charities.



Flint Knapping
Wednesday, February 25
Main Library, 6:30 p.m.
Enjoy a demonstration on the 40,000-year-old technique of shaping stone into tools, presented by archaeologist Madawck Galloway.

Take and Make: DIY Luggage Tag
Thursday, February 26
Scheben Branch
Pick up a kit to create a unique luggage tag that's perfect for your next big adventure, while supplies last.

Sourdough Class
Thursday, February 26
Hebron Branch, 6:30 p.m.
Warm up this winter by learning how to make your own sourdough bread, including everything from starter care to shaping and baking.

Stay Up to Date!
Follow Us on Social



Start, Shape & Bake!

Sourdough Class
Thursday, February 26
Hebron Branch
6:30 p.m.



experience events & workshops for KIDS

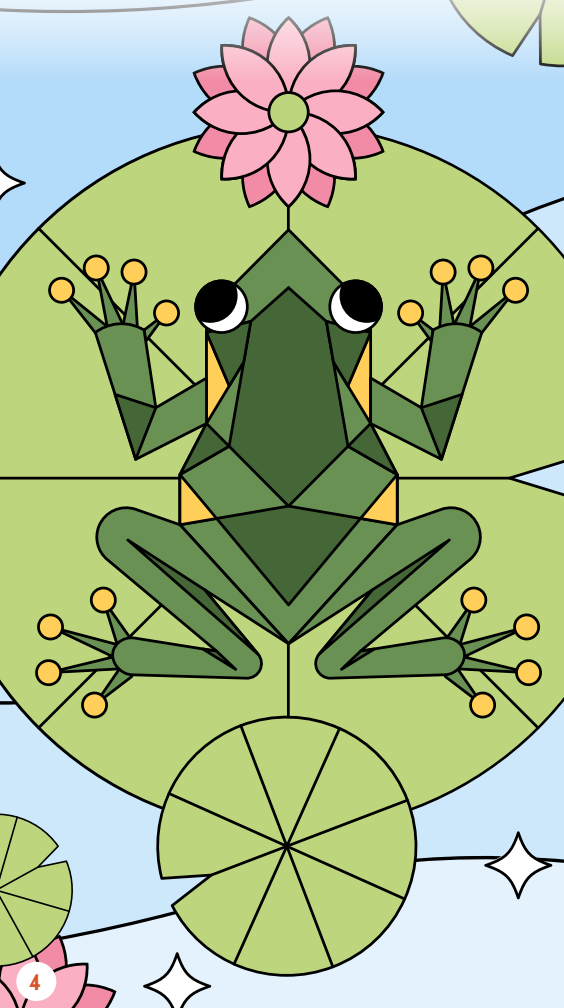
REGISTER FOR LIBRARY EVENTS

Go to bcpl.org and locate your program in the Library's event calendar or call 859-342-BOOK (2665) and select the appropriate location. All registrations will close one hour prior to the event unless otherwise noted.

Meet a Princess!

National Tell a Fairy Tale Day

Thursday, February 26
Scheben Branch, 6 p.m.



Cardboard Kingdom (family)

Sunday, February 1
Main Library, 2 p.m.

Hear ye, hear ye, calling all medieval architects. Put your collaborative building skills to the test and construct an empire.

Bee Mine (3-5 years)

Monday, February 2
Walton Branch, 6 p.m.

Bee-inspired by the story *If You'll Be My Valentine* by Cynthia Rylant, then craft some buzzy heart bees and paint hives with bubble wrap.



Paws to Read (grades K-5)

Monday, February 2
Scheben Branch, 6 p.m.

Practice reading to a certified therapy dog. Please register.

Reality TV Rumble (family)

Tuesday, February 3
Hebron Branch, 6 p.m.

Play games and solve puzzles inspired by your favorite reality TV shows. See if you can survive, compete and race through challenges that would impress Jeff, Julie and Phil.

ArtSmart (grades K-5)

Thursday, February 5
Scheben Branch, 6 p.m.

Celebrate Black History Month by making an abstract painting in the style of Alma Woodsey-Thomas.

Monday, February 9
Hebron Branch, 6 p.m.

Make a paper collage and painting inspired by Cincinnati-based modernist wildlife artist Charley Harper.

Tuesday, February 17
Walton Branch, 6 p.m.

Create a Romero Britto-inspired design using foil and markers.

Tinker Tales (2-5 years)

Saturday, February 7
Main Library, 10 a.m.

Enjoy a book and songs, then use everyday bits and bobs to build, play and create again and again.

Barnyard Buddies (grades K-5)

Saturday, February 7
Main Library, 1 p.m.

Down on the farm meet clucky chickens, herd runaway balloon animals and gather eggs from the coop.



ABC Play With Me (birth-5 years)

Tuesdays, February 10 and 24
Florence Branch, 10-11:30 a.m.

Learn and explore through play by participating in activities that promote healthy development and learning.

Passport Kitchen (grades 3-5)

Tuesday, February 10
Boone County Extension-Florence
4:30-6 p.m.

Travel to a different country and explore the foods of that culture! This month: South Africa. Please register.

Messy Science (grades 3-5)

Tuesday, February 10
Main Library, 6 p.m.

Experiment with colorful chemical reactions and make thermal slime.

Homeschool Sampler (grades 1-5)

Wednesday, February 11
Main Library, 2:30 p.m.

Wednesday, February 25
Walton Branch, 2:30 p.m.

Connect with other homeschool families through crafts, experiences and community presentations.

Pages and Paws (grades K-5)

Thursday, February 12
Florence Branch, 6 p.m.

Tuesday, February 17
Hebron Branch, 6 p.m.

Sunday, February 22
Main Library, 2 p.m.

Practice reading to a certified therapy dog. Please register.



Valentine-o-saurus (family)

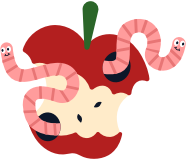
Saturday, February 14
Florence Branch, 10 a.m.

Make a card, play dino games and have a t-rexcellent time with our special guest, Dino Buddies LLC!

Dig Into the World of Worms (grades K-5)

Monday, February 16
Hebron Branch, 6 p.m.

Meet and hold composting earthworms from Gorman Heritage Farm! Discover through games how these small but mighty creatures help turn kitchen scraps into nutrient-rich soil.



Mad Scientists (grades 3-5)

Wednesday, February 18
Scheben Branch, 6 p.m.

Celebrate the work of George Washington Carver by making eco-plastic and exploring plant pigments.

The Cat With the Big Striped Hat (family)

Thursday, February 19
Scheben Branch, 6 p.m.

Read *The Cat in the Hat*, then there's so much to do! Partake in themed challenges and craft one thing or two.

book REVIEW

To celebrate Black History Month, Jami Larsh, Youth Services Associate, suggests these great reads.

Sulwe

by Lupita Nyong'o & Vashti Harrison

Soul Food Sunday

by Winsome Bingham & C.G. Esperanza

My Hair Is MAGIC!

by M.L. Marroquin & Tonya Engel

Black Boy, Black Boy: Celebrate the Power of You

by Ali Kamanda & Jorge Redmond

The Year We Learned to Fly

by Jacqueline Woodson & Rafael López

Rocket Says Look Up!

by Nathan Bryon & Dapo Adeola

The ABCs of Black History

by Rio Cortez & Lauren Semmer

The Night is Yours

by Abdul-Razak Zachariah & Keturah A. Bobo



Itty Bitty Playdate (birth-2 years)

Saturday, February 21
Scheben Branch, 10 a.m.

Enjoy playtime with developmentally appropriate play stations and activities.

Kid-lympics (2-5 years)

Saturday, February 21
Florence Branch, 1 p.m.

Go for gold as you race, jump, slide and skate your way to greatness at our winter games!

National Tell a Fairy Tale Day (3-5 years)

Thursday, February 26
Scheben Branch, 6 p.m.

Act out fairytale favorites through crafts and exploration play with a special appearance from a long-haired princess! Costumes welcome.



Call the YS Community Events Liaison at 859-342-2665 Ext. 8142 at least one week in advance if special accommodations are needed.

story TIME

Weekly through April 24

Build language and literacy skills through interactive stories, rhymes and music.

Storytimes are designed with certain ages in mind, but welcome all children.

Baby Time (birth-18 months)

MAIN LIBRARY

• Wed: 9:30 a.m.

SCHEBEN BRANCH

• Fri: 9:30 a.m.

Tiny Tots (18 months-2½ years)

SCHEBEN BRANCH

• Mon: 10 a.m.

• Wed: 10 a.m.

HEBRON BRANCH

• Tues: 10 a.m.

MAIN LIBRARY

• Thurs: 9:30 a.m.

• Thurs: 11 a.m.

WALTON BRANCH

• Fri: 10 a.m.

Toddler Tales (2½-3½ years)

MAIN LIBRARY

• Mon: 9:30 a.m.

• Wed: 11 a.m.

SCHEBEN BRANCH

• Tues: 11 a.m.

WALTON BRANCH

• Wed: 10 a.m.

HEBRON BRANCH

• Thurs: 10 a.m.

Stories with Art (3-6 years)

SCHEBEN BRANCH

• Tues: 6:30 p.m.

Sleepy Tales (birth-5+ years)

FLORENCE BRANCH

• Mon: 5 p.m.

MAIN LIBRARY

• Wed: 6:30 p.m.

Bookworms (3½-5+ years)

MAIN LIBRARY

• Tues: 11 a.m.

• Fri: 11 a.m.

SCHEBEN BRANCH

• Thurs: 10 a.m.

Family Time (birth-5+ years)

MAIN LIBRARY

• Mon: 11 a.m.

• Fri: 9:30 a.m.

SCHEBEN BRANCH

• Tues: 9:30 a.m.

WALTON BRANCH

• Tues: 9:30 a.m.

• Thurs: 9:30 a.m.

HEBRON BRANCH

• Wed: 10 a.m.

FLORENCE BRANCH

• Thurs: 11 a.m.

REGISTER FOR LIBRARY EVENTS

Go to bcpl.org and locate your program in the Library's event calendar or call 859-342-BOOK (2665) and select the appropriate location. All registrations will close one hour prior to the event unless otherwise noted.

Explore Cyanotypes

Blue-tiful
Monday, February 16
Scheben Branch
3-5 p.m.

Dungeons and Dragons (grades 6-12)
Fridays
Scheben Branch, 4-5:30 p.m.
Play D&D 5th Edition! All levels welcome. Characters are ready or bring your own. To be a dungeon or game master, email dpina@bcpl.org.



Global Goodies (grades 6-12)
Wednesday, February 4
Main Library, 6 p.m.
Travel to Uzbekistan, where you can try your hand at intricate embroidery and sample Uzbek plov.

Maker Monday (grades 6-12)
Monday, February 9
Walton Branch, 5 p.m.
Design bookmarks with cardstock, washi tape and tassels.

Video Game Club (grades 6-12)
Thursday, February 12
Scheben Branch, 6 p.m.
Battle for Ultimate Glory or exchange friend codes with new friends. Snacks provided.

Blue-tiful (grades 6-12)
Monday, February 16
Scheben Branch, 3-5 p.m.
Experiment with cyanotypes and UV light to make photographic art prints without a camera.

Lofi Library (grades 6-12)
Wednesday, February 18
Florence Branch, 6 p.m.
Design and create your own buttons to personalize your things. Snacks provided.

Winter Games (grades 6-12)
Saturday, February 21
Walton Branch, 11 a.m.
Go for gold with competitions like pizza box curling, team architect, house of cards, giant bowling and beanbag toss.

Manga Monday (grades 6-12)
Monday, February 23
Hebron Branch, 6 p.m.
Chill and chat about manga and anime, test your knowledge and make a craft based on your favorite characters!

Clay Sculpting (grades 6-12)
Tuesday, February 24
Main Library, 5 p.m.
Carve out some time for creativity with air-dry clay.



Call the YS Community Events Liaison at 859-342-2665 Ext. 8142 at least one week in advance if special accommodations are needed.

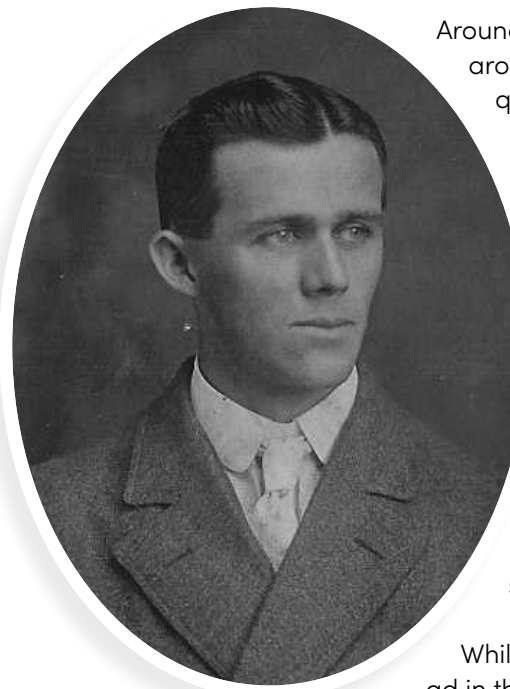


Romantic Raconteur of Petersburg

By Hillary Delaney, Local History Associate

Everett Lafayette Helms was born in Petersburg in 1876, the eldest child of De Lafayette and Mary Helms. By all accounts, Everett was a typical small-town boy, well known in the community his family had lived in for generations.

In 1897, Everett married Nellie Jane Krutz, the pixie-like daughter of a local merchant and banker. They started a family and attended the Petersburg Christian Church. Everett taught Sunday School, rising to the position of Superintendent. He often played Santa Claus for the church Christmas party.



Around 1916, Helms spent his leisure time tooling around the county in his "hub touring car," still quite a novelty in Boone County at the time. By trade, Everett was a barber, a craft that kept him constantly in public view of his community; his shop sold cigars and became a hangout for Petersburg's men. Business was good.

For a few years, Everett served as a deputy clerk of courts in Petersburg. His goal in this role was to get a record number of local young men to file marriage licenses. This was an indication that Helms was more than the "car guy" who held court at his barber shop; Everett was a romantic.

While still a high school student, he placed an ad in the paper which ran for several issues. In asking readers for help in finding his lost "music sack."

It's unclear if he ever found it, but it may have contained his earliest compositions. Everett Helms was on track to becoming a published composer of romantic songs.

Shortly after his marriage, he published a song titled *My Pretty Blue-Eyed Nell*, which was mentioned in the *Boone County Recorder* as "another beautiful song" published by Helms. Though not his first, this composition was clearly a homage to his bride. He continued to compose songs, probably more as a labor of love than a vocation, though he did sell copies of the sheet music. In 1906, his song *Sweetheart Edna Riley* gained more than local popularity. On page one of the paper, there was a claim that the song, which was distributed by a Chicago publishing house, was being "sung all over the world."

Helms' romantic songwriting didn't seem to slow down over the years, but his originality in coming up with titles may have. In 1920, he obtained two separate musical copyrights: the first for *Sweetheart I'm So Lonely* and another for the similarly titled *Sweetheart I'm So Blue*. Everett died at only 45 years old from a sudden stroke in 1922. His widow, Nellie, never remarried.

Archive and History Center Information

about

With 7000+ physical items, 4000+ digital items and 5 experts, the Archive and History Center at Boone County Public Library is the foremost authority in Boone County local history and genealogy.

desk hours

Monday-Friday 9 a.m.-5 p.m.
Saturday 1 p.m.-5 p.m.

contact us

859-342-2665 Ext. 8134
historycenterhelp@bcpl.org
Boone County Public Library
1786 Burlington Pike
Burlington, KY 41005



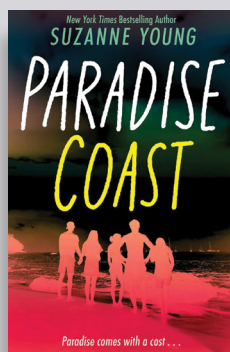
Add Your Veteran

In celebration of America's 250th, Boone County Public Library would like to add your local Boone County veteran to our Chronicles of Boone County Database, focusing on veterans up to and including World War II.

Add your veteran at www.bcpl.org/history and click on the link "Add Your Veteran".

A partnership between Boone County Public Library and the Boone County America's 250th Committee.

TEEN new releases



Paradise Coast
by Suzanne Young



The Sun and the Starmaker
by Rachel Griffin



Enola Holmes and the Clanging Coffin
Enola Holmes Mystery
by Nancy Springer



Stolen Midnight
by Katherine Quinn

Concerts

BCPL brings you a calendar of live music from a variety of musical artists!

Bands are subject to change without notice.



Call the Community Events Liaison at 859-292-3393 at least one week in advance if special accommodations are needed.

february

Langiappe
Friday, February 13
Main Library, 7 p.m.
Traditional Cajun music.

march

Matt Tolentino
Friday, March 20
Main Library, 7 p.m.
Jazz, swing and pop from the 20s and 30s.

april

Forest Hills Bluegrass Band
Friday, April 10
Main Library, 7 p.m.
Bluegrass.



Langiappe - February 13



Matt Tolentino - March 20

Resource Spotlight



Stay warm and enjoy the convenience with our Curbside or Drive-thru Service

Skip the cold and pick up your library holds without leaving your car! Browse the catalog and place holds anytime through BCPL's website or app, then choose your preferred pickup location. We will notify you as soon as your items are ready.

When You Arrive:

Main Library, Scheben Branch or Florence Branch

Park in a designated curbside spot and call 859-342-BOOK to let us know you are here.

Hebron Branch or Walton Branch

Pull up to the drive-thru window.

We'll check out your items and bring them directly to your car, all while you stay warm. Don't forget your library card! Need one? Stop by any location to sign up.

Boone Innovation Lab

Featured Project: Sublimated String Bag

Create a personalized string bag using the sublimation printer and flat heat press in the Boone Innovation Lab.



*design mirrored for print



Equipment Description

The Sublimation Printer is a dedicated printer with sublimation ink and paper. These prints will be transferred via the flat heat press (adds heat and pressure) to your final product, sublimating the printed ink into the polymer surface of your material.

What to Bring

- Polyester white string bag
- Design to print
- \$1.00 per page to print

Equipment Location

- Main Library
- Hebron Branch
- Walton Branch
- Mobile BIL

What the BIL Provides

- Sublimation printer (brand varies by location)
- Flat heat press

Pro Tips for Sublimated String Bags

Mirror

Mirror the design for print.

Size

The design size shown is 10.5" by 12". Piece together 2 letter size prints with the top and bottom of your design. Make sure to repeat some of the design in both prints to match the full design.

Caution

Be sure no part of the strings are in direct contact with the heat plate.

Press Settings

Temp 390°F

Pressing Time

50 seconds



Book your appointment at bcpl.org/bil

Whether you are trying something new or leveling up your skills, these highlighted projects are designed to inspire creativity and help you make the most of the equipment available in our Boone Innovation Labs.



BIL Information

about

Located at the Main Library, Hebron Branch, Walton Branch and the Mobile BIL, the BIL is a place to create, learn and preserve memories. For more information, visit bcpl.org/bil.

hours

Hours vary according to staff availability. Appointments are required.

equipment

Equipment varies across locations. Visit bcpl.org/bil to reserve the following for use in the BIL.

Audio/Visual

- green screen
- photo cube light set-up
- media conversion station

Crafting/Sewing

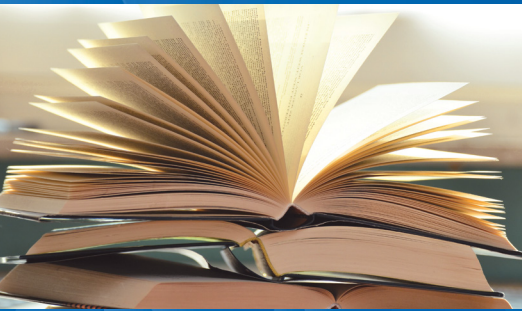
- sewing machine
- quilting machine
- embroidery machine
- serger
- button maker

Creator Group

- 3D printers
- xTool
- Cricut
- laser cutter
- poster printer
- sublimation printer
- heat press
- thermal laminator
- sticker/photo printer

Computers

- Wacom Tablet
- Adobe Creative Suite



BCPL Foundation

The Boone County Public Library Foundation is a non-profit, tax-exempt 501(c)(3) charitable organization. Contributions will enhance and support our mission statement beyond the means of public funding.

Make a Donation:



For more information or to make a donation, visit bcpl.org/foundation or scan the QR code. All donations are tax-deductible; an acknowledgment letter will be sent to the donor.

Board of Trustees

The Board of Trustees meets on the third Monday of each month at 4 p.m.

February Board Meeting

Monday, February 16
Main Library, 4 p.m.

March Board Meeting

Monday, March 16
Main Library, 4 p.m.

April Board Meeting

Monday, April 20
Walton Branch, 4 p.m.

May Board Meeting

Monday, May 18
Main Library, 4 p.m.

June Board Meeting

Monday, June 15
Main Library, 4 p.m.

Curt Bessette Art Gallery

The Curt Bessette Art Gallery is located on the first floor of the Main Library. It features work by regional and national artists, as well as special exhibits. The gallery gives local artists a chance to display their work for sale.

The namesake of the gallery, Curt Bessette, was a quiet child who spent many hours drawing and creating art of the people and scenes around him. As time passed, his interest in art and talent for various artistic styles only grew, until he became known by his peers as the Artist. Mr. Bessette also served on the Boone County Public Library Board of Trustees from July 2016 to February 2017.

On Exhibit

Tommy Siler

February 22 – March 25

Main Library, Curt Bessette Art Gallery

Tommy Siler is an artist who pursued a degree with a concentration in art from Cumberland College in Williamsburg, Kentucky. His hope after college was to continue his studies in art restoration, but life took over and those plans were detoured by the love of his life. After graduating in 1981 with the above-mentioned degree, he married in August of the same year.

While newly married and working various jobs, Siler returned to school to pursue a Master's Degree in Education. Although art was always his first passion, earning a steady living became necessary for the next 30 years. As a Boone County Schools employee, he served as a teacher, counselor, assistant principal and ultimately, concluded his career as a district administrator over preschool services. Of those three decades, only one year was spent working directly in the arts.

Now, as a retiree, Siler has returned to his first love as a painter and creator of fine arts.



Book Discussion Groups

To request a book, call 859-342-BOOK (2665) or email the group leader.

Best of the Best

Thursday, February 5
Florence Branch, 3 p.m.

The Frozen River by Ariel Lawhon
Read and discuss bestselling novels.
Leader Michael: mstulz@bcpl.org

Classics Unfolded

Monday, February 9
Walton Branch, 6 p.m.

A Confederacy of Dunces by John Kennedy Toole
Encounter timeless tales in new ways.
Leader Matthew: mhaase@bcpl.org

Chapter and Verse

Tuesday, February 10
Scheben Branch, 6:30 p.m.

Poverty, By America by Matthew Desmond
Read everything fiction to biographies.
Leader Shaun: spowell@bcpl.org

Thrillers and Chillers

Thursday, February 12
Main Library, 10 a.m.

The Marriage Portrait by Maggie O'Farrell
Read suspense, mystery and true crime.
Leader Alisa: asnow@bcpl.org

Chick Picks

Thursday, February 19
Main Library, 10 a.m.

The Wolf Den by Elodie Harper
Women of all ages read a mix of genres.
Leader Karen: khelmle@bcpl.org

Books to Savor

Sunday, February 22
Walton Branch, 2 p.m.

Hidden Figures by Margot Lee Shetterly
Read culinary-inspired novels and share recipes.
Leader Gabi: grichardson@bcpl.org

Monday 4 Mystery

Monday, February 23
Florence Branch, 6:30 p.m.

Starling House by Alix E. Harrow
Explore mystery and suspense novels.
Leader Kevin: kwadlow@bcpl.org

Books Amongst Birds

Wednesday, February 25
Hebron Branch, 6 p.m.

Bird watch and discuss your latest read.
Leader Vicki: vdurham@bcpl.org

ADULT new releases

It's Not Her

Mary Kubica

Stolen in Death

J. D. Robb

Wolf Hour

Jo Nesbo

Isles of the Emberdark

Brandon Sanderson

Jigsaw

Jonathan Kellerman

Double Trouble

Joyce Carol Oates

Cross and Sampson

James Patterson

Secondhand Luck

Kim Harrison

The Hadacol Boogie

James Lee Burke

Death of a Groom

M. C. Beaton

Cold Zero

Brad Thor

Two Can Play

Ali Hazelwood

Crown of War and Shadow

J. R. Ward

First Sign of Danger

Kelley Armstrong



Mobile Apps

BCPL App

Download the BCPL app from Apple's App Store or Google Play to search for items, manage your account, browse Library events and more.



Libby

Download the Libby app to access our expansive Kentucky Libraries Unbound digital collection and more.



Buy the Book

Buy the Book sells used books, movies, music and more at bargain prices! It is located on the first floor at the Main Library in Burlington and is open during library hours.

Buy the Book

SIX locations to serve you — one phone number: 859-342-BOOK (2665) www.bcpl.org #CheckOutBCPL

MAIN LIBRARY

1786 Burlington Pike, Burlington, KY 41005
Monday-Thursday 9am-9pm
Friday 9am-6pm
Saturday 9am-5pm
Sunday 1-5pm

HEBRON BRANCH

1863 North Bend Rd, Hebron, KY 41048
Monday-Thursday 9am-8pm
Friday 9am-6pm
Saturday 9am-5pm
Sunday 1-5pm

FLORENCE BRANCH

7425 US 42, Florence, KY 41042
Monday-Thursday 9am-8pm
Friday 9am-6pm
Saturday 9am-5pm

SCHEBEN BRANCH

8899 US 42, Union, KY 41091
Monday-Thursday 9am-8pm
Friday 9am-6pm
Saturday 9am-5pm
Sunday 1-5pm

WALTON BRANCH

13000 Towne Center Dr, Walton, KY 41094
Monday-Thursday 9am-8pm
Friday 9am-6pm
Saturday 9am-5pm
Sunday 1-5pm

CHAPIN MEMORIAL LIBRARY

6517 Market Street, Petersburg, KY 41080
Monday-Thursday 11am-7pm
Friday 10am-6pm
Saturday 10am-5pm

STAFF AVAILABLE:

Tuesday & Wednesday 2-7pm
Thursday 1-7pm

Meet the Board of Trustees

Dave Rich, Trustee

Dave Rich, Trustee on the BCPL Board, brings a wide-ranging professional background to his role. Before entering the corporate world, he worked as a farm laborer, university instructor, banker, investor and small business owner in rural Illinois. His career later took him to Michigan, where he joined Ford Motor Company and held positions in finance, marketing, manufacturing, logistics and product development.

Dave, along with his wife and two sons, moved to Union in 2009 when he became Chief Financial Officer for Toyota Boshoku America in Erlanger. Over the course of his career, he served as Chief Executive Officer or Chief Financial Officer for eight organizations and contributed his expertise to dozens of corporate boards. He is now retired.

Appointed as a Trustee in 2025, Dave is a frequent visitor to the Scheben Branch. He enjoys reading nonfiction

and listening to fiction audiobooks, inspired in part by the small library in his hometown that served as his “window to the world”. That early experience fed his curiosity and his desire to be a lifelong learner. He views libraries as focal points for encouraging creativity, developing capabilities and building community.

Dave enjoys traveling, live stand-up comedy, sports analytics, cooking (but not baking), art and live music.

