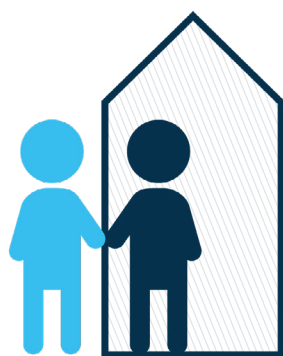


discover

Boone County Public Library



unseen

NEIGHBORS

A Focus on Homelessness
in Boone County

stories

In collaboration with the Shower Ministry, we will release a series of video interviews on our social media platforms featuring members of our community experiencing homelessness. By sharing their stories, we hope to deepen awareness and encourage compassion in Boone County.

discussion

Homelessness in Boone County

Wednesday, January 14

Main Library, 6:30 p.m.

Learn about our community's response to homelessness challenges with a panel discussion, including the Welcome House, the City of Florence and a representative of Boone County.

donations

Blanket & Socks Donation Drive | Through January 31

Help our neighbors in need by donating blankets and socks at any BCPL location. Place donations in bins marked Unseen Neighbors. Items will be distributed to our community during the K-Count and through local organizations.

Imagine being treated differently simply because you don't have a home. There are countless reasons someone may experience homelessness: housing costs, job loss, mental illness, addiction or family circumstances. In working with homeless people, I'm often reminded how easily they can be overlooked or treated as if they are less than human. Many hurry past without acknowledgment, forgetting that we all deserve basic courtesy and respect. Judging doesn't help, but understanding does.

-Ed McLaughlin
Florence Branch



Get this
newsletter
in the mail!



Visit bcpl.org and go to Events. Click on "View Newsletters" and fill out the Newsletter by Mail form.

BCPL
Boone County Public Library



explore events & workshops for ADULTS

REGISTER FOR LIBRARY EVENTS

Go to bcpl.org and locate your program in the Library's event calendar or call 859-342-BOOK (2665) and select the appropriate location. All registrations will close one hour prior to the event unless otherwise noted.

Buckeye Search and Rescue Dogs presents:

Search and Rescue Canines

Monday, January 12
Scheben Branch
6:30 p.m.

BCPL Locations and Book Drops Closed
Thursday, January 1
Happy New Year!

Unseen Neighbors
Through January 31
All locations
See front cover for details.

Zumba-Fit
Saturdays, January 3 and 17
Hebron Branch, 9:30 a.m.
Try a nonstop, medium-to-high intensity dance workout combining MixedFit and Zumba.



Travel Abroad on a Budget
Monday, January 5
Scheben Branch, 6:30 p.m.
Learn tips for planning and budgeting for international travel, including when to book flights and how to get the best value for your trip abroad.

Thrive Together
Tuesday, January 6
Scheben Branch, 10:30 a.m.
Adults with disabilities and their caregivers connect, build friendships and share experiences in a welcoming environment. Enjoy a story and guided art activity. Please register.

BIL: Canva Poster Designing
Tuesday, January 6
Hebron Branch, 6 p.m.
Learn how to use Canva to create your own posters perfect for graduations, weddings, birthdays and more.

Vision Board Bingo
Tuesday, January 6
Florence Branch, 6:30 p.m.
Manifest your New Year's goals as you design your own game card to follow.

The Art of Sashiko
Wednesday, January 7
Florence Branch, 6 p.m.
Practice a traditional Japanese embroidery stitching that is decorative, functional and relaxing. Presented by Boone County Extension Office. Please register.

Line Dancing
Wednesday, January 7
Scheben Branch, 6:30 p.m.

Saturday, January 10
Walton Branch, 10:30 a.m.

Get fit, have fun and learn several beginner-friendly line dances. Please register.

Bingo!
Thursday, January 8
Walton Branch, 6-7:30 p.m.
Try your luck and win some prizes!

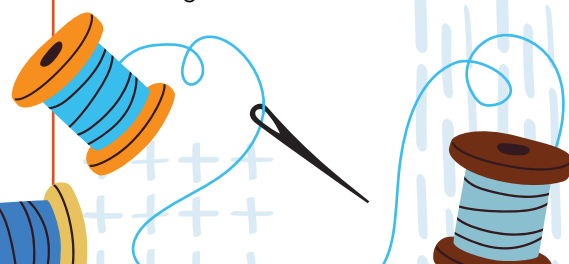
Search and Rescue Canines
Monday, January 12
Scheben Branch, 6:30 p.m.
Discover how highly trained dogs from Buckeye Search and Rescue Dogs detect missing people and get a chance to see one in person.

Discover the DAR
Tuesday, January 13
Walton Branch, 6:30 p.m.
Learn about the Daughters of the American Revolution, including the history, mission and activities of the Boone County chapter.

Writers Group
Tuesday, January 13
Main Library, 7 p.m.
Share your work for feedback. Email asnow@bcpl.org with guideline questions.

Homelessness in Boone County
Wednesday, January 14
Main Library, 6:30 p.m.
Learn about our community's response to homelessness challenges with a panel discussion, including the Welcome House, City of Florence and a representative of Boone County.

Suicide Prevention Training
Thursday, January 15
Main Library, 6:30 p.m.
QPR (Question, Persuade and Refer) are 3 simple steps anyone can learn to help save a life from suicide. Larry McNabb MRC, CRC teaches how to recognize the warning signs of a suicide crisis. Receive a certificate after completing the training. Please register.



The Oddity Hour
Thursday, January 15
Florence Branch, 6:30 p.m.
Poe-lease help us celebrate the birthday of this iconic gothic writer with themed crafts.

Adult Spelling Bee
Saturday, January 17
Walton Branch, 2 p.m.
Show off your linguistic and literary abilities with exemplary spelling in this competition of wit and recollection!

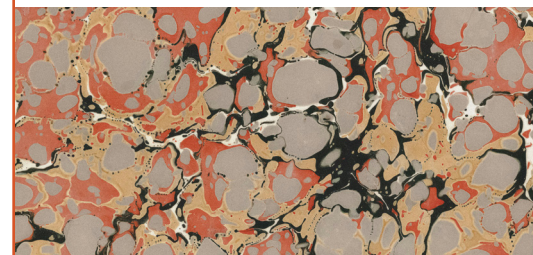


Midweek Mahjongg
Wednesday, January 21
Walton Branch, 4-7 p.m.
Drop in and take a midweek break. All levels welcome.

Trivia Night
Wednesday, January 21
Main Library, 6:30 p.m.
Play trivia just for fun! Bring your own team or we will put one together for you.

Comfort Quilts
Monday, January 26
Main Library, 9:30 a.m.-2:30 p.m.
Sew quilts for community charities.

United Way Free Tax Prep - Drop-Off Service
Mondays, January 26-March 30
Florence Branch, 5-6 p.m.
Get help with your taxes from trained and certified volunteers. Visit <https://www.uwgc.org/find-help/free-tax-prep/> or call 2-1-1 for more information. No appointments necessary.



The Art of Paper Marbling
Monday, January 26
Hebron Branch, 6 p.m.
Create unique notecards with hands-on instruction.

Senior Games
Euchre Tournament
Tuesday, January 27
Main Library, 12:30 p.m.

Bocce Tournament
Wednesday, January 28
Main Library, 12:30 p.m.

Register with the Boone County Parks at 859-334-2117.

Cute as a Button Accessories
Tuesday, January 27
Florence Branch, 6:30 p.m.
Add a touch of whimsy to your style by crafting your own DIY hair clips and jewelry.

The Practice of Journaling
Wednesday, January 28
Main Library, 6:30 p.m.
Explore the different styles, methods and benefits of journaling. Please bring your favorite notebook and pens.

Are You Smarter Than a Scammer?
Thursday, January 29
Scheben Branch, 2 p.m.
Test your knowledge of common scam tactics and learn how to identify and avoid them online, over the phone and more.



Bonsai Tree Basics
Thursday, January 29
Hebron Branch, 6:30 p.m.
Discuss the history, design techniques, tools and care of Bonsai, the Japanese art of shaping miniature trees. One attendee will take home a Bonsai tree. Presented by the Bonsai Society of Greater Cincinnati.

 Call the Community Events Liaison at 859-292-3393 at least one week in advance if special accommodations are needed.

Take and Makes

Take and Make: Catnip Knot Toys
Monday, January 5
Hebron Branch
Pick up a kit to make knot toys for your feline friends, while supplies last.

Take and Make: Reach Out for Help
Monday, January 5
Florence Branch
Pick up a first aid kit with a guide on helpful resources provided in our community, while supplies last.

Take and Make: Winter Mocktail
Monday, January 12
Walton Branch
Pick up a kit to make pineapple cinnamon cider, while supplies last.

Take and Make: Mini Dice Tower
Monday, January 12
Main Library
Pick up a kit to create a mini dice tower using pieces laser cut in the Boone Innovation Lab, while supplies last.

Take and Make: Snowflake Bookmark
Thursday, January 22
Scheben Branch
Pick up a kit to create a magnetic flurry page finder, while supplies last.

Weekly Programs

Yoga for Healthy Weight
Mondays
Main Library, 6 p.m.
Wednesdays
Hebron Branch, 6 p.m.

Thursdays
(no class January 1)
Scheben Branch, 6 p.m.
Bring a yoga mat. \$30 monthly. Register at 859-334-2117.

Easy English Group
Wednesdays
Florence Branch, noon
Improve your English reading and speaking skills. All levels welcome.

Chair Yoga
Thursdays
(no class January 1)
Walton Branch, 2 p.m.
Relax with gentle movements.

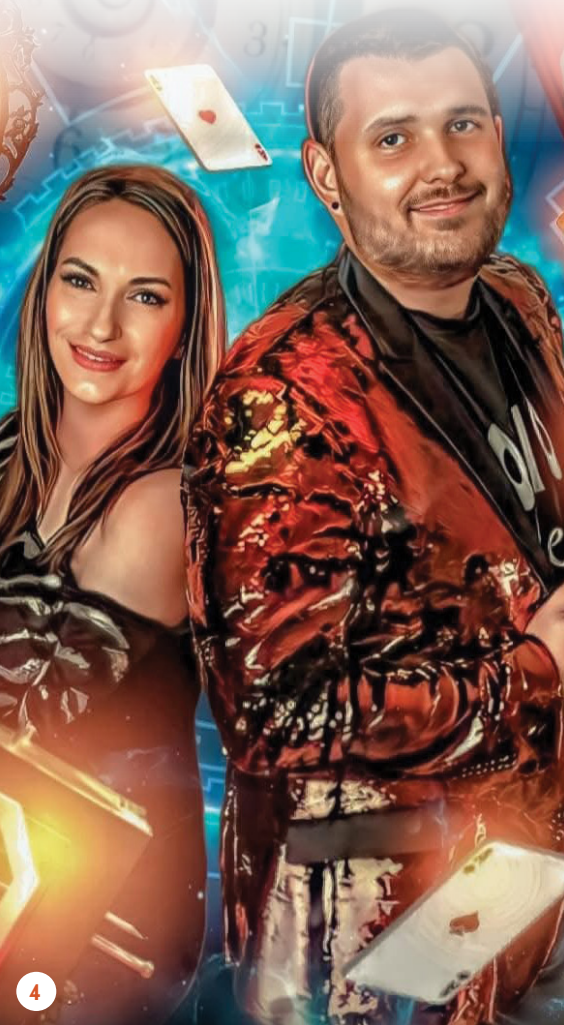
experience events & workshops for KIDS

REGISTER FOR LIBRARY EVENTS

Go to bcpl.org and locate your program in the Library's event calendar or call 859-342-BOOK (2665) and select the appropriate location. All registrations will close one hour prior to the event unless otherwise noted.

Illusions & Laughter

Aaron Harp Magic
Thursday, January 22
Hebron Branch, 6 p.m.



BCPL Locations and Book Drops Closed

Thursday, January 1
Happy New Year!

Brick by Brick (grades 1-5)
Friday, January 2
Main Library, 4 p.m.

Create a brick masterpiece! Supplies are provided and creations will be displayed at the library.

Tinker Tales (2-5 years)
Saturday, January 3
Main Library, 10 a.m.

Enjoy a book and songs, then use everyday bits and bobs to build, play and create again and again.

Hundred Acre Wood Party (2-5 years)
Thursday, January 8
Hebron Branch, 6 p.m.

Travel to the Hundred Acre Wood and party with Pooh and friends. Decorate your own pot of honey, help Eeyore find his tail and satisfy your rumbly tumbly with a tasty snack.

ArtSmart (grades K-5)
Thursday, January 8
Scheben Branch, 6 p.m.

Explore the ways fiber artists make beautiful patterns in quilts and design your own paper quilt.

Monday, January 12
Hebron Branch, 6 p.m.

Ready, set, stamp! Learn about printmaking and create prints by using a variety of objects.

Tuesday, January 20
Walton Branch, 6 p.m.

Paint a stunning Van Gogh masterpiece using a fork to create movement and texture.



Animal Tales: Art of the Wild (family)
Saturday, January 10
Main Library, 2 p.m.

Embark on a color quest to discover how creatures use colors in the wild. Then visit with several animal ambassadors.

ABC Play With Me (birth-5 years)
Tuesdays, January 13 and 27
Florence Branch, 10-11:30 a.m.

Learn and explore through play by participating in activities that promote healthy development and learning.

Messy Science (grades 3-5)
Tuesday, January 13
Main Library, 6 p.m.

Discover the invisible world of germs through two experiments that explore how and why germs spread.

Homeschool Sampler (grades 1-5)
Wednesday, January 14
Main Library, 2:30 p.m.

Wednesday, January 28
Walton Branch, 2:30 p.m.

Connect with other homeschool families through crafts, experiences and community presentations.

Story Maker (grades 1-5)

Thursday, January 15
Walton Branch, 6 p.m.

Calling all young authors and artists! Write, illustrate and create a book to take home.



Itty Bitty Playdate (birth-2 years)
Saturday, January 17
Scheben Branch, 10 a.m.

Enjoy playtime with developmentally appropriate play stations and activities.

Winter Ball (2-5 years)
Sunday, January 18
Main Library, 2 p.m.

You are cordially invited to put on your favorite outfit to hear magical stories, have an indoor snowball fight and dance the day away.

Day of Play (family)

Monday, January 19
Walton Branch, all day

Drop-in to build, imagine and explore with our Big Blue Blocks.

Take and Make: Birthday Butterflies (2-5 years)

Monday, January 19
Florence Branch

Pick up a kit and create a patchwork butterfly to celebrate Dolly Parton's birthday, while supplies last.



Call the YS Community Events Liaison at 859-342-2665 Ext. 8142 at least one week in advance if special accommodations are needed.

National Popcorn Day! (grades K-5)
Monday, January 19
Scheben Branch, 2 p.m.

Pop 'til you drop playing balloon kernel stomp, try to win the title of Cornhole Champ and make your own tasty popcorn mix!

2026 Glow Party (grades K-5)
Tuesday, January 20
Hebron Library, 6 p.m.

Shine bright in your neon or white! Celebrate the new year with a glow maze, neon bingo with prizes, glow crafts and dance games.

Mad Scientists (grades 3-5)
Wednesday, January 21
Scheben Branch, 6 p.m.

It's a building bonanza! Test your engineering skills with design challenges using unique building materials like seashells and pipe cleaners.

Aaron Harp Magic (family)
Thursday, January 22
Hebron Branch, 6 p.m.

Brace yourself for laughter as you watch never before seen illusions and comedy magic.



Peanut Butter & Jam Sessions: Winter Winds (family)
Wednesday, January 28
Scheben Branch, 6 p.m.

Get up close and personal with the woodwind family. Discover these instruments while moving and grooving to music that explores weather!



Weekly January 5 - April 24

Build language and literacy skills through interactive stories, rhymes and music. Storytimes are designed with certain ages in mind, but welcome all children.

Baby Time (birth-18 months)

MAIN LIBRARY

• Wed: 9:30 a.m.

SCHEBEN BRANCH

• Fri: 9:30 a.m.

Tiny Tots (18 months- 2½ years)

SCHEBEN BRANCH

• Mon: 10 a.m.

• Wed: 10 a.m.

HEBRON BRANCH

• Tues: 10 a.m.

MAIN LIBRARY

• Thurs: 9:30 a.m.

• Thurs: 11 a.m.

WALTON BRANCH

• Fri: 10 a.m.

Toddler Tales (2½-3½ years)

MAIN LIBRARY

• Mon: 9:30 a.m.

• Wed: 11 a.m.

SCHEBEN BRANCH

• Tues: 11 a.m.

WALTON BRANCH

• Wed: 10 a.m.

HEBRON BRANCH

• Thurs: 10 a.m.

Stories with Art (3-6 years)

SCHEBEN BRANCH

• Tues: 6:30 p.m.

Sleepy Tales (birth-5+ years)

FLORENCE BRANCH

• Mon: 5 p.m.

MAIN LIBRARY

• Wed: 6:30 p.m.

Bookworms (3½-5+ years)

MAIN LIBRARY

• Tues: 11 a.m.

• Fri: 11 a.m.

SCHEBEN BRANCH

• Thurs: 10 a.m.

Family Time (birth-5+ years)

MAIN LIBRARY

• Mon: 11 a.m.

• Fri: 9:30 a.m.

SCHEBEN BRANCH

• Tues: 9:30 a.m.

WALTON BRANCH

• Tues: 9:30 a.m.

• Thurs: 9:30 a.m.

HEBRON BRANCH

• Wed: 10 a.m.

FLORENCE BRANCH

• Thurs: 11 a.m.

book REVIEW

Alyssa Scherzinger, Youth Services Librarian at the Main Library, shares her favorite snowy reads.

- Snow*
by Sam Usher
- Winter Lullaby*
by Dianne White
illustrated by Ramona Kaulitzki
- Winter Trees*
by Carole Gerber
illustrated by Leslie Evans
- Counting Winter*
by Nancy White Carlstrom
illustrated by Claudia McGehee
- Wait, Rest, Pause: Dormancy in Nature*
by Marcie Flinchum Atkins
- On a Flake-Flying Day: Watching Winter's Wonders*
by Buffy Silverman
- Snow is...*
by Laura Gehl
illustrated by Sonia Sánchez
- Solstice: Around the World on the Longest, Shortest Day*
by Jen Breach



REGISTER FOR LIBRARY EVENTS

Go to bcpl.org and locate your program in the Library's event calendar or call 859-342-BOOK (2665) and select the appropriate location. All registrations will close one hour prior to the event unless otherwise noted.

Use Your Wits to Win!

Escape Room

Thursday, January 15
Main Library, 6 p.m.

BCPL Locations and Book Drops Closed

Thursday, January 1
Happy New Year!

Dungeons and Dragons (grades 6-12)

Fridays

Scheben Branch, 4-5:30 p.m.

Play D&D 5th Edition! All levels welcome. Characters are ready or bring your own. To be a dungeon or game master, email dpina@bcpl.org.

Global Goodies (grades 6-12)

Wednesday, January 7

Main Library, 6 p.m.

Jet off to Switzerland where we will explore the art of decoupage and sample decadent Swiss hot chocolate.



Video Game Club (grades 6-12)

Thursday, January 8

Scheben Branch, 6 p.m.

Battle for Ultimate Glory or exchange friend codes with new friends. Snacks provided.

Teen Time (grades 6-12)

Monday, January 12

Walton Branch, 5 p.m.

Light up the winter with a paper lantern craft while you learn about Lunar New Year traditions.



Call the YS Community Events Liaison at 859-342-2665 Ext. 8142 at least one week in advance if special accommodations are needed.



Lofi Library (grades 6-12)

Wednesday, January 14

Florence Branch, 6 p.m.

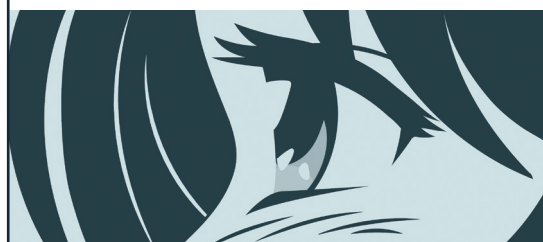
Create a junk journal to keep unique mementos of 2026. Journal provided.

Escape Room (grades 6-12)

Thursday, January 15

Main Library, 6 p.m.

Step into the stacks of an ancient library or the depths of a mysterious dungeon and use your wits to solve puzzles and escape before time runs out.



Manga Monday (grades 6-12)

Monday, January 26

Hebron Branch, 6 p.m.

Chill and chat about your favorite manga and anime, test your knowledge and make a craft based on your favorite characters!

The Murrell Gang's Buried Treasure

By Hillary Delaney, Local History Associate

A discovery along the Ohio River near the Boone-Kenton County line caused quite a stir in 1860 and summoned memories of one of the worst crime-gangs of the 19th century. A Covington man and his friend from Cincinnati were exploring the riverfront, driving a steel ramrod into the ground when they hit something solid. After digging away the surrounding dirt, the pair removed a soiled, tin box, which had been buried about two feet beneath the surface. Its dimensions were about that of a modern shoebox, and it was secured with a brass lock.

Once forced open, the mysterious contents revealed themselves. They included: several letters, written in code, four conveyance (deed) documents, a pair of lady's half-worn dark goat leather gloves, a pair of fine gold spectacles and a small oval gold plate or charm engraved with a hand holding a flamed dagger encircled with the letters S. O. W. I. K. These items were bundled together in a copy of the Cincinnati Gazette dated September 8, 1837. Also in the box was a piece of dingy paper covered with coded messages, \$415 in American and English gold, 21 Spanish and

US silver coins, four gold and nine silver watches, 26 small keys, various pieces of jewelry and two fine Derringer pistols.

Upon hearing of the discovery, two separate claims were made for the valuables, both with



the explanation that the person who owned them had been robbed by the notorious "Murrell Gang," named for leader James A. Murrell. The gang consisted of a group of "land pirates" who terrorized travelers and communities along the Ohio and Mississippi Rivers. The bandits developed a diverse criminal skill-set, beginning with horse-thievery and robbing flatboats. Their activities later included counterfeiting, stealing and selling enslaved people and murder for gain. They were known to be violent and adept at avoiding capture, hiding in caves along the riverbanks.

Any discovery of seemingly pilfered items or human remains tucked away in riverfront hiding places were often attributed to the Murrell Gang's decades-long crime wave. Their infamy loomed large, working its way into the pages of American masterpieces like Twain's *Huckleberry Finn* and the works of William Faulkner.

The Murrell Gang passed through our area many times during the height of their crime-spree and doubtless affected travelers and citizens alike. Their exploits were recounted for decades after their criminal collective was forcibly disbanded in the late 1830s. All were captured along the rivers, some arrested in New Orleans and one of the gang members, caught in Cincinnati, stated he had buried his "booty" somewhere across the river. Could more stolen bounty be yet discovered?

Archive and History Center Information

about

With 7000+ physical items, 4000+ digital items and 5 experts, the Archive and History Center at Boone County Public Library is the foremost authority in Boone County local history and genealogy.

desk hours

Monday-Friday 9 a.m.-5 p.m.
Saturday 1 p.m.-5 p.m.

contact us

859-342-2665 Ext. 8134
historycenterhelp@bcpl.org

Boone County Public Library
1786 Burlington Pike
Burlington, KY 41005



Add Your Veteran

In celebration of America's 250th the Boone County Public Library would like to add your local Boone County, Kentucky veteran to our Chronicles of Boone County Database, focusing on veterans up to and including World War II.

Add your veteran at www.bcpl.org/history and click on the link "Add Your Veteran."

A partnership between
Boone County Public Library and the Boone County America's 250th Committee.

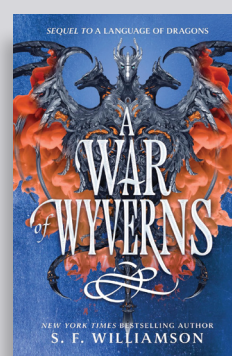
TEEN new releases



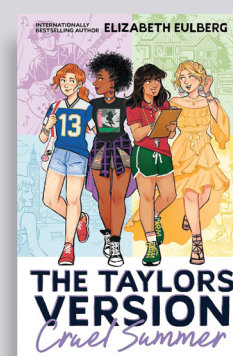
A Wild Radiance
by Maria Ingrande Mora



Winter White
by Annie Cardi



A War of Wyverns
Language of Dragons
by S. F. Williamson



Cruel Summer
The Taylors Version
by Elizabeth Eulberg

January fun and prizes with the Winter Reading Challenge!

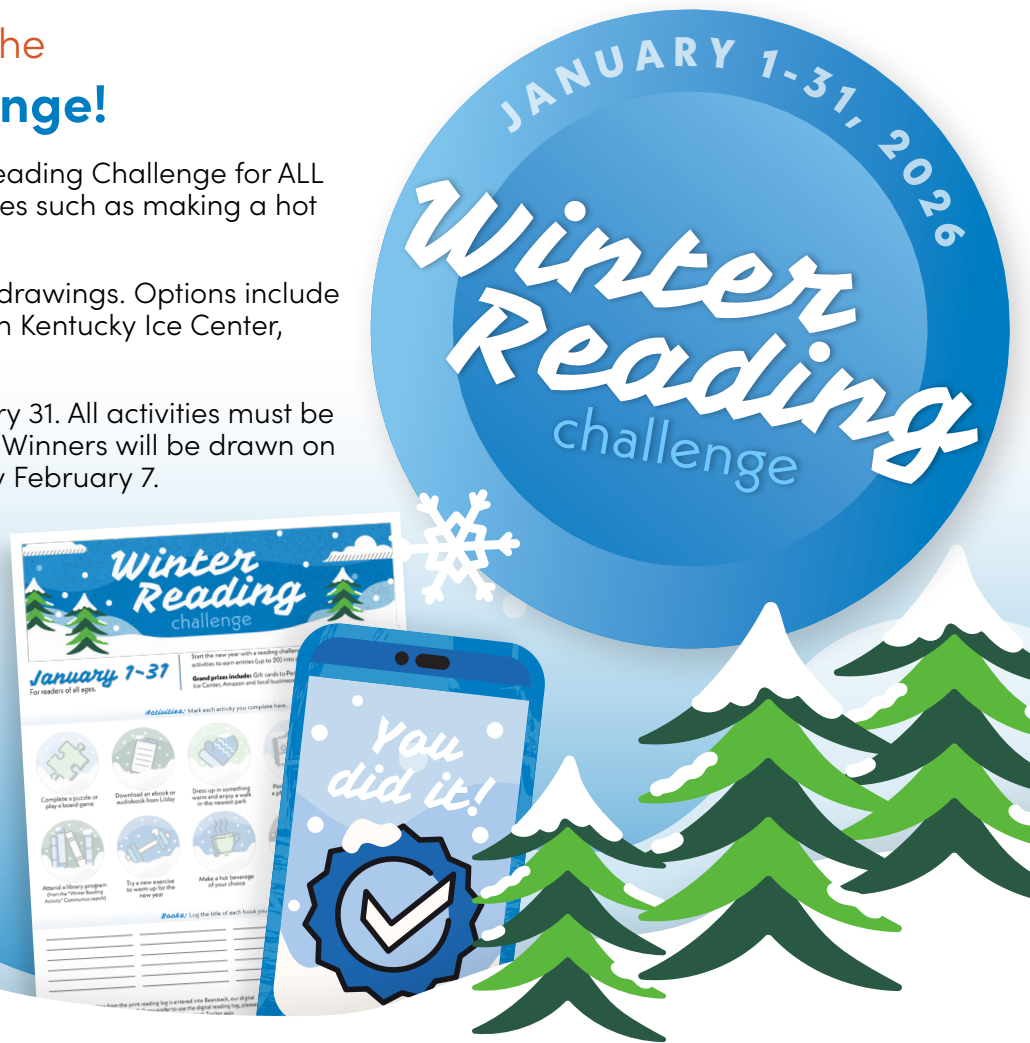
Start the new year with the 2026 Winter Reading Challenge for ALL AGES! Read books or complete fun activities such as making a hot beverage or creating a music playlist.

Earn up to 20 entries into the grand prize drawings. Options include gift cards to Perfect North Slopes, Northern Kentucky Ice Center, Amazon and local businesses.

Logging begins January 1 and ends January 31. All activities must be entered by Friday, January 31 at 11:59 p.m. Winners will be drawn on February 1. All prizes must be picked up by February 7.



Download the Beanstack Tracker app to log your progress. If you prefer a paper log, visit bcpl.org.



Digital Resource

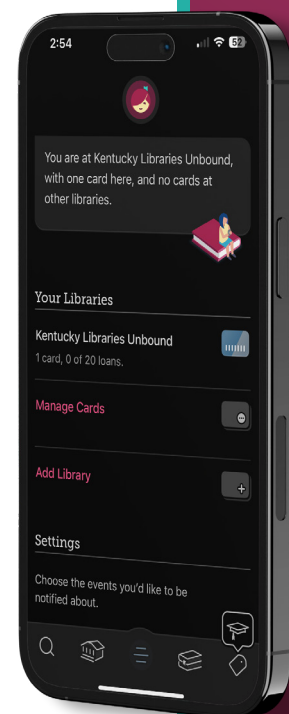
New Year, New Stories with the Libby App

Take the library anywhere with Libby! Access ebooks, audiobooks, magazines and more from Kentucky Libraries Unbound (KLU) with your library card.

Explore KLU Extras:

- ArtistWorks** - Learn instruments with video lessons.
- Classica** - Watch classical music, opera and ballet.
- IndieFlix** - Enjoy independent films and documentaries.
- Qello Concerts** - Stream concerts and music documentaries.
- TeachingBooks** - Learn about books with videos and activities.
- The Great Courses** - Explore courses taught by top instructors.

Download the Libby app to access these features and more!



Boone Innovation Lab

Featured Project: Embroidered Sweatshirt

Create a personalized sweatshirt using the Viking Embroidery Machine in the **Boone Innovation Lab at the Walton Branch**.



Book your appointment at
bcpl.org/bil



Equipment Description

The Husqvarna Viking Designer Epic 2 is an advanced sewing and embroidery machine. It can embroider up to 1,000 stitches per minute and includes 750 built-in embroidery designs compatible with multiple hoop sizes.

What to Bring

- Sweatshirt of your choice
- Embroidery design (dst file) - If you need your design digitized, email a png file to waltonbil@bcpl.org.
- Fabric for applique

What the BIL Provides

- Stabilizer
- Embroidery thread
- Viking Embroidery Machine with:
 - 13 preloaded fonts
 - 750 preloaded designs
 - Hoop sizes: 14x10, 10x8, 4x4

Pro Tips for Embroidered Sweatshirts

Best Designs for Digitizing:

Cartoon
Black Outline
Simple

Applique Tip:

Adding fabric applique gives your project extra dimension.

Recommended Width for Full-Front Designs:

Youth XS-S: 6"
Youth M-L: 7"
Youth XL / Adult S-M: 8"
Adult L: 9"
Adult XL: 10"



BIL Information

about

Located at the Main Library, Hebron Branch and Walton Branch, the BIL is a place to create, learn and preserve memories. For more information, visit bcpl.org/bil.

hours

Hours vary according to staff availability. Appointments are required.

equipment

Equipment varies across locations. Visit bcpl.org/bil to reserve the following for use in the BIL.

Audio/Visual

green screen
photo cube light set-up
media conversion station

Crafting/Sewing

sewing machine
quilting machine
embroidery machine
serger
button maker

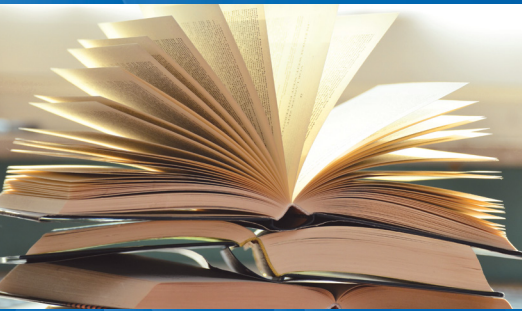
Creator Group

3D printers
xTool
Cricut
laser cutter
poster printer
sublimation printer
heat press
thermal laminator
sticker/photo printer

Computers

Wacom Tablet
Adobe Creative Suite

Whether you are trying something new or leveling up your skills, these highlighted projects are designed to inspire creativity and help you make the most of the equipment available in our Boone Innovation Labs.



BCPL Foundation

The Boone County Public Library Foundation is a non-profit, tax exempt 501(c)(3) charitable organization. Contributions will enhance and support our mission statement beyond the means of public funding.

Make a Donation:



For more information or to make a donation, visit bcpl.org/foundation or scan the QR code. All donations are tax-deductible; an acknowledgment letter will be sent to the donor.

Board of Trustees

The Board of Trustees meets on the third Monday of each month at 4 p.m.

January Board Meeting

Monday, January 19
Florence Branch, 4 p.m.

February Board Meeting

Monday, February 16
Main Library, 4 p.m.

March Board Meeting

Monday, March 16
Main Library, 4 p.m.

April Board Meeting

Monday, April 20
Walton Branch, 4 p.m.

May Board Meeting

Monday, May 18
Main Library, 4 p.m.

June Board Meeting

Monday, June 15
Main Library, 4 p.m.

Curt Bessette Art Gallery

The Curt Bessette Art Gallery is located on the first floor of the Main Library. It features work by regional and national artists, as well as special exhibits. The gallery gives local artists a chance to display their work for sale.

The namesake of the gallery, Curt Bessette, was a quiet child who spent many hours drawing and creating art of the people and scenes around him. As time passed, his interest in art and talent for various artistic styles only grew, until he became known by his peers as the Artist. Mr. Bessette also served on the Boone County Public Library Board of Trustees from July 2016 to February 2017.

On Exhibit

Boone County Visual Arts Association

January 11 - February 14

Main Library, Curt Bessette Art Gallery

Boone County Visual Arts Association (BCVAA) brings together local artists and art supporters from across Northern Kentucky, representing a wide range of styles and media. The group embodies the creativity and mastery its members strive for in their artistic expression. Members work in photography, fiber arts, mixed media, oil, acrylic, watercolor and pastel.

BCVAA's mission is to promote appreciation of the visual arts throughout the community.



Book Discussion Groups

To request a book, call 859-342-BOOK (2665) or email the group leader.

Classics Unfolded

Monday, January 12
Walton Branch, 6 p.m.

Queen's Gambit by Walter Tevis
Encounter timeless tales in new ways.
Leader Matthew: mhaase@bcpl.org

Chapter and Verse

Tuesday, January 13
Scheben Branch, 6:30 p.m.

The Last Year of the War
by Susan Meissner
Read everything fiction to biographies.
Leader Shaun: spowell@bcpl.org

Thrillers and Chillers

Thursday, January 8
Main Library, 10 a.m.

Homecoming by Kate Morton
Read suspense, mystery and true crime.
Leader Alisa: asnow@bcpl.org

Chick Picks

Thursday, January 15
Main Library, 10 a.m.

First Lie Wins by Ashley Elston
Women of all ages read a mix of genres.
Leader Karen: khelmle@bcpl.org

Books to Savor

Sunday, January 25
Walton Branch, 2 p.m.

A Man Called Ove by Fredrik Backman
Read culinary-inspired novels and share recipes.
Leader Gabi: grichardson@bcpl.org

Monday 4 Mystery

Monday, January 26
Florence Branch, 6:30 p.m.

The Safe Place by Anna Downes
Explore mystery and suspense novels.
Leader Kevin: kwadlow@bcpl.org

ADULT new releases

The Invisible Woman
James Patterson

Rings of Fate
Melissa de la Cruz

The Viper
Brad Meltzer

The Right to Remain
James Grippando

The Storm
Rachel Hawkins

Through Gates of Garnet and Gold
Seanann McGuire

The Shop on Hidden Lane
Jayne Ann Krentz

Remember That Day
Mary Balogh

Dark Joy
Christine Feehan

Order of Royals
Jude Deveraux

The Devil's Daughter
Danielle Steel

Private Rome
James Patterson

Woman Down
Colleen Hoover



Mobile Apps

BCPL App

Download the BCPL app from Apple's App Store or Google Play to search for items, manage your account, browse Library events and more.



Libby

Download the Libby app to access our expansive Kentucky Libraries Unbound digital collection and more.



Buy the Book

Buy the Book sells used books, movies, music and more at bargain prices! It is located on the first floor at the Main Library in Burlington and is open during library hours.

Buy
the
Book

SIX locations to serve you — one phone number: 859-342-BOOK (2665) www.bcpl.org #CheckOutBCPL

MAIN LIBRARY

1786 Burlington Pike, Burlington, KY 41005
Monday-Thursday 9am-9pm
Friday 9am-6pm
Saturday 9am-5pm
Sunday 1-5pm

HEBRON BRANCH

1863 North Bend Rd, Hebron, KY 41048
Monday-Thursday 9am-8pm
Friday 9am-6pm
Saturday 9am-5pm
Sunday 1-5pm

FLORENCE BRANCH

7425 US 42, Florence, KY 41042
Monday-Thursday 9am-8pm
Friday 9am-6pm
Saturday 9am-5pm

SCHEBEN BRANCH

8899 US 42, Union, KY 41091
Monday-Thursday 9am-8pm
Friday 9am-6pm
Saturday 9am-5pm
Sunday 1-5pm

WALTON BRANCH

13000 Towne Center Dr, Walton, KY 41094
Monday-Thursday 9am-8pm
Friday 9am-6pm
Saturday 9am-5pm
Sunday 1-5pm

CHAPIN MEMORIAL LIBRARY

6517 Market Street, Petersburg, KY 41080
Monday-Thursday 11am-7pm
Friday 10am-6pm
Saturday 10am-5pm

STAFF AVAILABLE:

Tuesday & Wednesday 2-7pm
Thursday 1-7pm

Julie Althaver

Grant Writer and Data Analyst

Julie Althaver serves as the Grant Writer and Data Analyst Director at BCPL, bringing more than 15 years of fundraising and communications experience to the role. Throughout her career, she has secured millions of dollars in support from individuals, corporations, foundations, and government funders on behalf of academic institutions and nonprofit organizations.

Julie has led fundraising campaigns, coordinated major events, and obtained significant grant funding. At BCPL, her expertise in grant writing, donor relations, and data-driven strategy is already making a strong impact. She has helped secure funding for staff continuing education, a communication system, a GED testing center at the Florence Branch, a history walk exhibit and outdoor mural project at the Main Library, and a large-scale community event planned for 2026.

"I am thrilled to be part of a dedicated team that supports local and global communities through our programs, services, and collections," Julie says. "The team's

commitment to helping all residents on their lifelong learning journey is truly incredible."

In addition to her grant work, Julie partners closely with the Library Foundation to encourage philanthropic support. Residents may make tax-deductible contributions to the Foundation through cash gifts, IRA charitable giving, stock donations and planned gifts, helping ensure the Library continues to grow and be innovative for the community.

Originally from Michigan, Julie moved to Northern Kentucky in 2009. She is married with three children and one grandchild, and enjoys traveling, hiking in national parks, and cooking Sunday dinners with her family.

