

discover

Boone County Public Library

Families can learn, play and discover at the 20th Annual Early Childhood Fair

Join us for the 20th Annual Early Childhood Fair on **Saturday, March 7 at the Main Library in Burlington, 10 a.m.–12:30 p.m.** featuring a fun, informative experience for families with young children.

Explore activities and resources from more than twenty community organizations, connect with preschools and enrichment programs, and enjoy hands-on experiences like live animals from **Cool Critters Outreach** and the Exploration Station from the **Cincinnati Museum Center**.

Families can take advantage of free developmental screenings for children ages 2 months–36 months, plus walk-in vision screenings from the **Lions Club** and hearing screenings from **Cincinnati Children's**. Stop by the service desk to sign up for Dolly Parton's Imagination Library and 1000 Books Before Kindergarten.

The Early Childhood Fair is presented by:
Boone County Schools and Boone County Public Library and includes door prizes generously donated by local organizations.



Door Prizes
Donated by
Local Organizations

BCPL
Boone County Public Library

Saturday, March 7
10 a.m.–12:30 p.m.
Main Library
in Burlington

**Get this
newsletter
in the mail!**

Visit bcpl.org and go to Events.
Click on "View Newsletters"
and fill out the Newsletter
by Mail form.

explore events & workshops for ADULTS

REGISTER FOR LIBRARY EVENTS

Go to bcpl.org and locate your program in the Library's event calendar or call 859-342-BOOK (2665) and select the appropriate location. All registrations will close one hour prior to the event unless otherwise noted.

Weekly Programs

Yoga for Healthy Weight
Mondays
Main Library, 6 p.m.

Wednesdays
Hebron Branch, 6 p.m.

Thursdays
Scheben Branch, 6 p.m.

Bring a yoga mat. \$30 monthly. Register at 859-334-2117.

Easy English Group
Wednesdays
Florence Branch, noon
Improve your English reading and speaking skills. All levels welcome.

Chair Yoga
Thursdays
Walton Branch, 2 p.m.
Relax with gentle movements.

Mini Displays

Dorothy Caldwell & Caroline Williams
Main Library
Lives and friendship from the Caldwell family papers.

Big Bone Lick
Scheben Branch
Big Bone's history.

Pottery and Clay Art
Walton Branch
Art by Marianne "Mimi" Wilce.

Spring Into Wellness Health Fair
Florence Branch
Local health resources.

United Way Free Tax Prep: Drop-Off Service
Mondays, through March 30
Florence Branch, 5-6 p.m.
Get tax help with trained and certified volunteers. Visit www.uwgc.org/find-help/free-tax-prep/ or call 2-1-1 for more information. No appointments necessary.

Beginner Quilter Series
Mondays, March 2, 16 and 30
Walton Branch, 5:30 p.m.
Learn the basics of sewing and quilting to complete a four-block table runner. Participants must attend all sessions and bring a sewing machine and thread. Please register.

Thrive Together
Tuesday, March 3
Scheben Branch, 10:30 a.m.
Adults with disabilities along with their caregivers connect, build friendships and share experiences in a welcoming environment. Enjoy a story and a guided art activity. Please register.

Hoxworth Blood Drive
Tuesday, March 3
Main Library, noon-6 p.m.
Visit hoxworth.org/groups/bcpl or call (513) 451-0910 for an appointment.

BIL: Jewelry That Resin-ates
Tuesday, March 3
Hebron Branch, 5 p.m.
Make custom earrings or charms using UV resin and acrylic. Please register.

Line Dancing
Wednesday, March 4
Scheben Branch, 6:30 p.m.

Saturday, March 14
Walton Branch, 10:30 a.m.

Get fit, have fun and learn several beginner-friendly line dances. Please register.

Zumba-Fit
Saturdays, March 7 and 21
Hebron Branch, 9:30 a.m.
Try a nonstop, medium-to-high intensity dance workout combining MixedFit® and Zumba.

Intro to Genealogy
Tuesday, March 10
Scheben Branch, 10 a.m. and 2 p.m.

Tuesday, March 31
Chapin Memorial Library, 5:30 p.m.

Learn how to start looking into your own family lineage. Please register.

Women of Cincinnati
Tuesday, March 10
Hebron Branch, 6:30 p.m.
Learn about the women who helped shape local history, from prominent figures to everyday people. Presented by the Cincinnati Museum Center.

Writers Group
Tuesday, March 10
Main Library, 7 p.m.
Share your work for feedback. Email asnow@bcpl.org with questions.

BIL: Ribbon Bookmark
Wednesday, March 11
Walton Branch, 3 p.m.
Learn to hand sew a placeholder for your books.



The Perils of Poisonous Plants
Wednesday, March 11
Florence Branch, 6:30 p.m.
Explore the history and science of toxic flora, from their role in toxicology and medicine to the dangers found in everyday environments. Presented by Patrick Ford from Lloyd Library & Museum.

Bingo!
Thursday, March 12
Walton Branch, 6-7:30 p.m.
Try your luck and win some prizes!

Jigsaw Puzzle Competition
Thursday, March 12
Main Library, 6:30 p.m.
See who can be first to finish a 500-piece jigsaw puzzle within a two-hour time limit. Please register each person in your team, teams up to four people.

Miffy Party at the Library!
Saturday, March 14
Florence Branch, noon
Celebrate this cute little bunny as you delve into fun themed crafts and a chance to win door prizes provided by Miffy Town. Please register.



Call the Community Events Liaison at 859-292-3393 at least one week in advance if special accommodations are needed.

Tech Help Drop-in
Tuesday, March 16
Main Library, 10 a.m.-noon and 2-4 p.m.
Get one-on-one assistance with your device. A UK extension volunteer will be available to answer questions and provide basic troubleshooting. Please register for a 20-minute time slot.

Spring Paper Wreath
Monday, March 16
Hebron Branch, 6 p.m.
Put together a door or wall decoration using recycled paper.

Spring Into Wellness Health Fair
Tuesday, March 17
Florence Branch, 1-4 p.m.
Local agencies will provide information, health screenings and tools to assist with leading a healthier lifestyle. Screenings on a first-come, first-served basis.

Take and Make: Geometric Bowls
Wednesday, March 18
Scheben Branch
Pick up a kit to create a decorative origami bowl, while supplies last.

Midweek Mahjongg
Wednesday, March 18
Walton Branch, 4-7 p.m.
Drop in and take a break, all levels welcome.

Trivia Night
Wednesday, March 18
Main Library, 6:30 p.m.
Play trivia just for fun! Bring your own team or we'll put one together for you.

Kentucky's Aviation History
Thursday, March 19
Walton Branch, 6:30 p.m.
Learn about Kentucky's aviation history, featuring innovators John Leland Atwood of Walton and Solomon Van Meter of Lexington. Presented by the Aviation Museum of Kentucky.

Boone County Historical Society
Thursday, March 19
Main Library, 6:30 p.m.
Explore 140 years of racing and gaming history in Northern Kentucky, from the old Latonia Race Track to Turfway Park.

The Oddity Hour
Thursday, March 19
Florence Branch, 6:30 p.m.
Design a small window-style artwork with natural materials and scenic photos.

Together or Apart? Community Discussions
Monday, March 23
Hebron Branch, 9:30 a.m.
Tuesday, March 24
Walton Branch, 9:30 a.m.
Tuesday, March 31
Florence Branch, 9:30 a.m.
Join your neighbors for a Deliberate Dialog about connecting past divisions within the Northern Kentucky community. Please register at nky-forum.org.

Comfort Quilts
Monday, March 23
Main Library, 9:30 a.m.-2:30 p.m.
Sew quilts for community charities.

No Bad Art
Tuesday, March 24
Walton Branch, 3 p.m.
Unleash your creativity in this no-judgment art workshop using provided supplies and a variety of mediums.

Beginner Salsa Dancing
Tuesday, March 24
Main Library, 6:30 p.m.
Learn the basic steps and rhythms of salsa. Partners optional. Please register.

BIL: Spring Wind Spinners
Wednesday, March 25
Main Library, 6:30 p.m.
Sublimate a wind spinner with a provided design of your choice. Please register.

Backyard Chickens
Wednesday, March 25
Scheben Branch, 6:30 p.m.
Discover all you need to know about chicken breeds, safe coops, health care and city/county regulations to start a backyard chicken flock with suburban micro-homesteader, Luci Slawnyk.

The Bison Invasion of North America
Thursday, March 26
Scheben Branch, 6 p.m.
Join Friends of Big Bone to explore the evolution of bison and how local discoveries helped identify three species.

Trinket Swap
Saturday, March 28
Florence Branch, 11 a.m.
Bring your pocket-sized treasures, from miniature charms to handmade keepsakes and trade them with fellow collectors.

Bunco Tournament
Monday, March 30
Walton Branch, 2 p.m.
Roll dice, rotate tables and enjoy friendly competition in a fast-paced social game.

Bird Seed Eggs
Tuesday, March 31
Scheben Branch, 1 p.m.
Discover the basics of birdwatching while creating egg-ticing treats to invite winged friends into your outdoor space!



From Coops to Regualtions

Backyard Chickens

Wednesday, March 25
Scheben Branch
6:30 p.m.



experience events & workshops for KIDS

REGISTER FOR LIBRARY EVENTS

Go to bcpl.org and locate your program in the Library's event calendar or call 859-342-BOOK (2665) and select the appropriate location. All registrations will close one hour prior to the event unless otherwise noted.

Cincinnati Observatory presents:

Space Exploration

Thursday, March 19
Hebron Branch, 6 p.m.

Paws to Read (grades K-5)

Monday, March 2
Scheben Branch, 6 p.m.

Practice reading to a certified therapy dog. Please register.

Lava Lamp Experiment (grades K-5)

Monday, March 2
Walton Branch, 6 p.m.

Get groovy and conduct a science experiment to create a lava lamp.



ArtSmart (grades K-5)

Thursday, March 5
Scheben Branch, 6 p.m.

Inspired by artist Barbara Hepworth, create a clay sculpture necklace and frame views wherever you go.

Monday, March 9
Hebron Branch, 6 p.m.

Learn about still life art, then set up your own scene to paint.

Tuesday, March 17
Walton Branch, 6 p.m.

Inspired by artist Paul Klee, blend watercolors and outline shapes with black marker to create abstract designs.

Early Childhood Fair (family)

Saturday, March 7
Main Library, 10 a.m.-12:30 p.m.
See front cover.

ABC Play With Me (birth-5 years)

Tuesdays, March 10 and 24
Florence Branch, 10-11:30 a.m.

Learn and explore through play by participating in activities that promote healthy development and learning.

Passport Kitchen (grades 3-5)

Tuesday, March 10
Boone County Extension-Florence
4:30-6 p.m.

Each month, travel to a different country and explore the foods of that culture! This month: India! Please register.

Messy Science (grades 3-5)

Tuesday, March 10
Main Library, 6 p.m.

Build a playdough volcano, then watch it erupt in an explosively fun experiment.



Homeschool Sampler (grades 1-5)

Wednesday, March 11
Main Library, 2:30 p.m.

Wednesday, March 25
Walton Branch, 2:30 p.m.

Connect with other homeschool families through crafts, experiences and community presentations.

Band in a Bus (grades 1-5)

Wednesday, March 11
Scheben Branch, 6 p.m.

Saturday, March 28
Scheben Branch, 2 p.m.

Here comes the bucket brigade! Jam out as you learn rhythm and play musical games.

Pages and Paws (grades K-5)

Thursday, March 12
Florence Branch, 6 p.m.

Tuesday, March 17
Hebron Branch, 6 p.m.

Sunday, March 29
Main Library, 2 p.m.

Practice reading to a certified therapy dog. Please register.

Tinker Tales (2-5 years)

Saturday, March 14
Main Library, 10 a.m.

Enjoy a book and songs, then use everyday bits and bobs to build, play and create again and again.

The Floor is Lava (grades 1-5)

Sunday, March 15
Main Library, 2 p.m.

Jump, balance and race through a course featuring the Big Blue Blocks, where touching the floor means defeat.



Black Light Bingo (family)

Monday, March 16
Scheben Branch, 6 p.m.

Wear neon or white and shine bright as we glow crazy playing this family favorite with colorful surprises for all!

Mad Scientists (grades 3-5)

Wednesday, March 18
Scheben Branch, 6 p.m.

Florence Nightingale believed clean hands could save lives. Discover how germs spread and disappear with glitter and soap.

Space Exploration (family)

Thursday, March 19
Hebron Branch, 6 p.m.

Tour the solar system with the Cincinnati Observatory! Learn about planets and view the sky with a telescope, weather permitting.

Itty Bitty Playdate (birth-2 years)

Saturday, March 21
Scheben Branch, 10 a.m.

Enjoy playtime with developmentally appropriate play stations and activities.

Caterpillar Collage (grades K-5)

Saturday, March 21
Florence Branch, 1 p.m.

Learn about the art process of Eric Carle, then create your own collage.



Peanut Butter & Jam Presents: The Gingerbread Man (family)

Monday, March 23
Walton Branch, 6 p.m.

Our fuzzy friends at Madcap Puppets will join us to tell another classic tale set to music from the piano, violin and cello.

Books, Bits & Bobs (3-5 years)

Thursday, March 26
Hebron Branch, 6 p.m.

Enjoy a book and songs, then use everyday bits and bobs to build, play and create again and again.



Call the YS Community Events Liaison at 859-342-2665 Ext. 8142 at least one week in advance if special accommodations are needed.

story TIME

Weekly through April 24

Build language and literacy skills through interactive stories, rhymes and music.

Storytimes are designed with certain ages in mind, but welcome all children.

Baby Time (birth-18 months)

MAIN LIBRARY

• Wed: 9:30 a.m.

SCHEBEN BRANCH

• Fri: 9:30 a.m.

Tiny Tots (18 months-2½ years)

SCHEBEN BRANCH

• Mon: 10 a.m.

• Wed: 10 a.m.

HEBRON BRANCH

• Tues: 10 a.m.

MAIN LIBRARY

• Thurs: 9:30 a.m.

• Thurs: 11 a.m.

WALTON BRANCH

• Fri: 10 a.m.

Toddler Tales (2½-3½ years)

MAIN LIBRARY

• Mon: 9:30 a.m.

• Wed: 11 a.m.

SCHEBEN BRANCH

• Tues: 11 a.m.

WALTON BRANCH

• Wed: 10 a.m.

HEBRON BRANCH

• Thurs: 10 a.m.

Stories with Art (3-6 years)

SCHEBEN BRANCH

• Tues: 6:30 p.m.

Sleepy Tales (birth-5+ years)

FLORENCE BRANCH

• Mon: 5 p.m.

MAIN LIBRARY

• Wed: 6:30 p.m.

Bookworms (3½-5+ years)

MAIN LIBRARY

• Tues: 11 a.m.

• Fri: 11 a.m.

SCHEBEN BRANCH

• Thurs: 10 a.m.

Family Time (birth-5+ years)

MAIN LIBRARY

• Mon: 11 a.m.

• Fri: 9:30 a.m.

SCHEBEN BRANCH

• Tues: 9:30 a.m.

WALTON BRANCH

• Tues: 9:30 a.m.

• Thurs: 9:30 a.m.

HEBRON BRANCH

• Wed: 10 a.m.

FLORENCE BRANCH

• Thurs: 11 a.m.



Scan the QR code or visit bcpl.org to sign up!

Our goal is to help the children of Boone County be ready for kindergarten!

Every child, birth to age 5, registered for the program will receive an age-appropriate, high-quality book each month.

Questions? Email us: imaginationlibrary@bcpl.org

REGISTER FOR LIBRARY EVENTS

Go to bcpl.org and locate your program in the Library's event calendar or call 859-342-BOOK (2665) and select the appropriate location. All registrations will close one hour prior to the event unless otherwise noted.

Discover Brazil!

Global Goodies

Wednesday, March 4
Main Library, 6 p.m.

Dungeons and Dragons (grades 6-12)

Fridays

Scheben Branch, 4-5:30 p.m.

Play D&D 5th Edition! All levels welcome. Characters are ready or bring your own. To be a dungeon or game master, email dpina@bcpl.org.

Global Goodies (grades 6-12)

Wednesday, March 4

Main Library 6 p.m.

Jet off to Brazil, where we will create murals inspired by Brazilian Street Art and sample sequilhos.

BIL: Maker Monday (grades 6-12)

Monday, March 9

Walton Branch, 5 p.m.

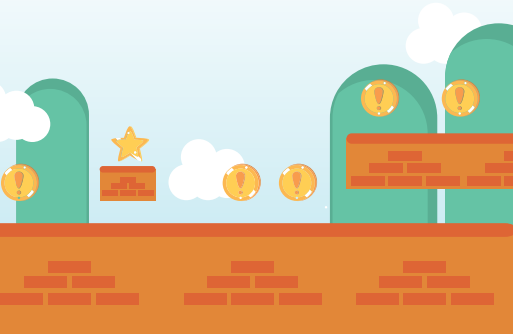
Create a cup koozie from pre-selected options using a sublimation machine.

Game On! (grades 6-12)

Tuesday, March 10

Hebron Branch, 6 p.m.

Don your red cap and overalls for a night of chill video gaming in celebration of a certain plumber.



Video Game Club (grades 6-12)

Thursday, March 12

Scheben Branch, 6 p.m.

Battle for Ultimate Glory or exchange friend codes with new friends. Snacks provided.



Lofi Library (grades 6-12)

Wednesday, March 18

Florence Branch, 6 p.m.

Assemble a portal to the realm of the fae using mushrooms, twigs, moss and various enchanting materials. Snacks provided.

Manga Monday (grades 6-12)

Monday, March 23

Hebron Branch, 6 p.m.

Chill and chat about your favorite manga and anime, test your knowledge and make a craft based on your favorite characters!

Cozy Corner (grades 6-12)

Tuesday, March 24

Main Library, 5 p.m.

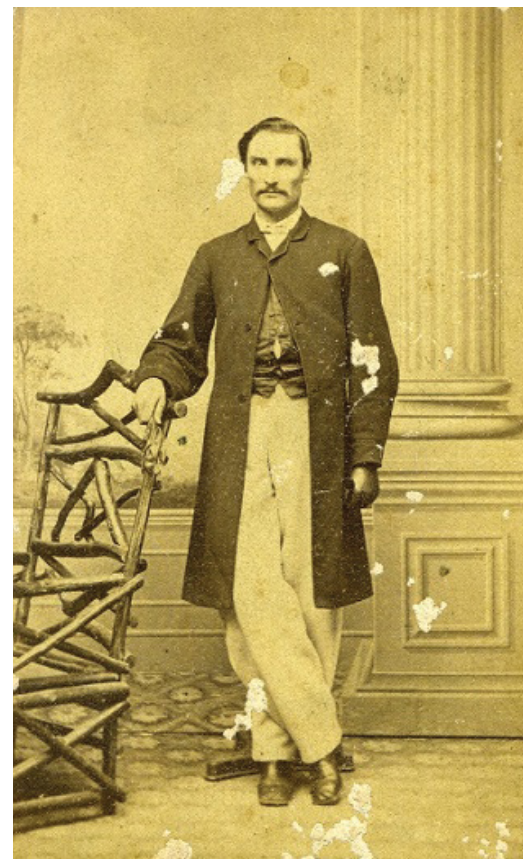
Unwind by playing cozy video games, watching a movie and coloring mandalas while discovering more stress-relieving techniques.



Call the YS Community Events Liaison at 859-342-2665 Ext. 8142 at least one week in advance if special accommodations are needed.

The Mysterious German Count of Constance

By Hillary Delaney, Local History Associate



Mahew Collection
Boone County Public Library
Archive and History Center Digital Collection

Everyone loves a good "whodunit", but how about a "who is it" mystery? In 1904, the good folks of Constance were pondering that very question.

In those early days, the Ohio River was a busy corridor for travel, and accidents occurred as often as on our modern roadways. On the highway, accident scenes are stationary, while on the river, the current can carry its victims quietly away, sometimes unnoticed.

Rivers are rough in some spots, calmer in others and in some areas the current flows toward the bank and deposits whatever it carries. The riverfront at Constance is such a place, where floating debris often washes up, including unfortunate victims of drownings, riverboat accidents or foul play.

This occurred frequently enough that the Boone County Coroner was a regular caller, so it was probably no surprise when he was summoned in 1904. As was often the case with

these unwelcome "visitors," the body that had floated ashore was a stranger and could not be identified. The condition of the body did not seem suspicious and no cause of death was determined. Additionally, no claims of a missing loved one were submitted, so the body was buried in a plain box near the river, as was customary at the time.

Two years later, the coroner received a pair of secretive visitors from afar who were searching for a missing loved one. Aware of the discovery of a body in 1904, the visitors suspected it might be a family member, yet refused to identify themselves by name. What was disclosed, however, was that the search concerned a brother who belonged to European nobility. The last information shared indicated he had boarded a boat in Cincinnati two years earlier. Fears of foul play lingered, as the man had been traveling with a large sum of money and other valuables.

The coroner agreed to exhume the body. Upon examination of the remains, the men identified several gold fillings in the teeth and were convinced. It was indeed their brother, who carried the title of "Graf" which is the German equivalent of "Count." The nameless German Count of Constance was transferred to an expensive metal casket and taken away, leaving only an empty riverbank grave and a mystery.

Archive and History Center Information

about

With 7000+ physical items, 4000+ digital items and 5 experts, the Archive and History Center at Boone County Public Library is the foremost authority in Boone County local history and genealogy.

desk hours

Monday-Friday 9 a.m.-5 p.m.
Saturday 1 p.m.-5 p.m.

contact us

859-342-2665 Ext. 8134
historycenterhelp@bcpl.org

Boone County Public Library
1786 Burlington Pike
Burlington, KY 41005



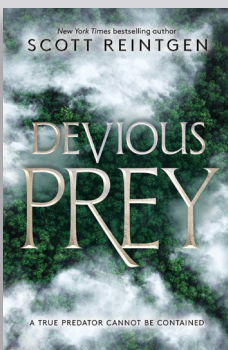
Add Your Veteran

In celebration of America's 250th, Boone County Public Library would like to add your local Boone County veteran to our Chronicles of Boone County Database, focusing on veterans up to and including World War II.

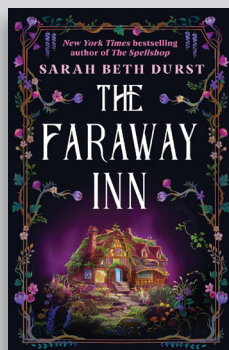
Add your veteran at www.bcpl.org/history and click on the link "Add Your Veteran".

A partnership between
Boone County Public Library and the Boone
County America's 250th Committee.

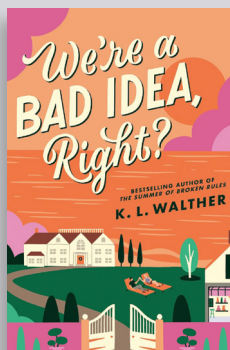
TEEN new releases



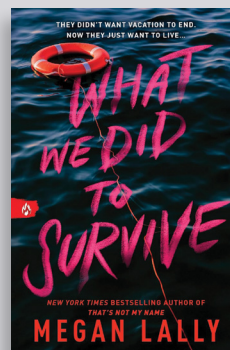
Devious Prey
Scott Reintgen



The Faraway Inn
Sarah Beth Durst



We're a Bad Idea, Right?
K. L. Walther



What We Did to Survive
Megan Lally

Concerts

BCPL brings you a calendar of live music from a variety of musical artists!

Please bring your own chair to the outdoor concerts.

Bands are subject to change without notice.

 Call the Community Events Liaison at 859-292-3393 at least one week in advance if special accommodations are needed.



Digital Resource



 ACCESS VIDEO ON DEMAND

Unlimited Streaming with Access Video On Demand

Enjoy unlimited streaming of quality entertainment and educational videos with Access Video On Demand. Using your library card, you can watch thousands of TV shows, films, documentaries and instructional videos anytime, anywhere.

This collection features content from trusted producers like A&E, BBC, National Geographic, PBS, TED and more. Enjoy popular HBO titles such as *Robin Williams: Come Inside My Mind* and *Fake Famous*, along with exclusive videos you will not find anywhere else. New content is added regularly, so there is always something new to discover.

Create a personal account with your library card to save favorites, build playlists and start streaming today.

march

Matt Tolentino
Friday, March 20
Main Library, 7 p.m.
Jazz, swing and pop from the 20s and 30s.

april

Forest Hills Bluegrass Band
Friday, April 10
Main Library, 7 p.m.
Bluegrass.

may

Kentucky Symphony Orchestra's Men in Black Quintet
Friday, May 1
Main Library, 7 p.m.
Historical brass hits.



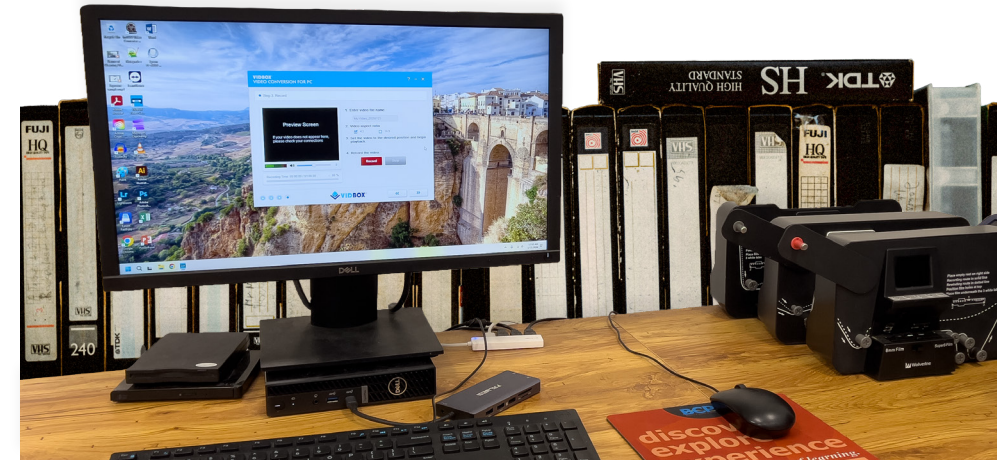
Matt Tolentino - March 20

Forest Hills Bluegrass Band - April 10

Boone Innovation Lab

Featured Project: Preserving VHS Memories

Do you have old VHS tapes filled with family memories? The Main BIL can help you digitally preserve them!



Equipment Description

Using our **VIDBOX® VHS-to-Digital converter**, you can transfer your tapes into modern digital files that play on computers, phones or TVs.

What to Bring

- A VHS tape
- A USB drive to save your digital file
- Note: USB drives are available for purchase at the library for \$5

Equipment Location

- Main Library

What the BIL Provides

- VCR (video cassette player)
- VIDBOX® converter
- VIDBOX® software

Pro Tips for Digitally Preserving VHS Tapes

Real-time Recording

Conversion happens as the tape plays. A 30-minute tape takes 30 minutes to digitize.

Plan Your Visit

Appointments can be scheduled as 1-hour or 2-hour sessions.

Watch the Clock

Each recording session is limited to 45 minutes to allow for conversion and saving.

Preservation

Your VHS memories will be ready to share, watch and keep safe for years to come.



Book your appointment at bcpl.org/bil

Whether you are trying something new or leveling up your skills, these highlighted projects are designed to inspire creativity and help you make the most of the equipment available in our Boone Innovation Labs.



BIL Information

about

Located at the Main Library, Hebron Branch and Walton Branch, the BIL is a place to create, learn and preserve memories. For more information, visit bcpl.org/bil.

hours

Hours vary according to staff availability. Appointments are required.

equipment

Equipment varies across locations. Visit bcpl.org/bil to reserve the following for use in the BIL.

Audio/Visual

- green screen
- photo cube light set-up
- media conversion station

Crafting/Sewing

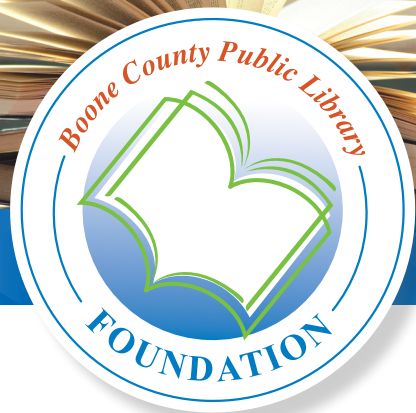
- sewing machine
- quilting machine
- embroidery machine
- serger
- button maker

Creator Group

- 3D printers
- xTool
- Cricut
- laser cutter
- poster printer
- sublimation printer
- heat press
- thermal laminator
- sticker/photo printer

Computers

- Wacom Tablet
- Adobe Creative Suite



Contributions will enhance and support our mission statement beyond the means of public funding.

Make a donation:



Online: Donate securely via PayPal
By Mail: Mail check to the Foundation
 1786 Burlington Pike
 Burlington KY 41005

Community Programs: Give through the Horizon Community Fund or Kroger Community Rewards

Other: Multiply your impact through gifts of stock, donor-advised funds or qualified charitable distributions, honorarium or memorial gifts, or create a lasting legacy through a planned gift.

To learn more, please contact:
Carrie Herrmann, Executive Director
 859-292-3387 | cherrman@bcpl.org

Board of Trustees

The Board of Trustees meets the third Monday of each month at 4 p.m.

March Board Meeting
 March 16 at Main Library

April Board Meeting
 April 20 at Walton Branch

May Board Meeting
 May 18 at Main Library

June Board Meeting
 June 15 at Main Library

Curt Bessette Art Gallery

The Curt Bessette Art Gallery is located on the first floor of the Main Library. It features work by regional and national artists, as well as special exhibits. The gallery gives local artists a chance to display their work for sale.

The namesake of the gallery, Curt Bessette, was a quiet child who spent many hours drawing and creating art of the people and scenes around him. As time passed, his interest in art and talent for various artistic styles only grew, until he became known by his peers as the Artist. Mr. Bessette also served on the Boone County Public Library Board of Trustees from July 2016 to February 2017.

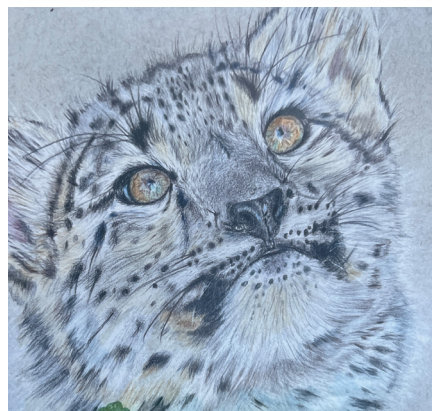
On Exhibit

Annie King-Dennis

March 31 – May 11

Main Library, Curt Bessette Art Gallery

Born in the foothills of the Appalachians, Annie King-Dennis spent her childhood exploring woods, walking deer trails and playing in mountain streams. This early connection to nature fostered a deep appreciation and love for the natural world, inspiring her to observe and paint the remarkable creatures we share it with. Through her work, Annie aims to inspire others to connect with nature and art while encouraging them to capture the beauty that surrounds them.



Book Discussion Groups

To request a book, call 859-342-BOOK (2665) or email the group leader.

Best of the Best

Thursday, March 5
 Florence Branch, 3 p.m.

Did You Hear About Kitty Karr?
 by Crystal Smith Paul
 Read and discuss bestselling novels.
 Leader Michael: mstulz@bcpl.org

Chapter and Verse

Tuesday, March 10
 Scheben Branch, 6:30 p.m.

All the Forgivenesses
 by Elizabeth Hardinger
 Read everything fiction to biographies.
 Leader Shaun: spowell@bcpl.org

Thrillers and Chillers

Thursday, March 12
 Main Library, 10 a.m.

Death at the Sign of the Rook
 by Kate Atkinson
 Read suspense, mystery and true crime.
 Leader Alisa: asnow@bcpl.org

Chick Picks

Thursday, March 19
 Main Library, 10 a.m.

The Lost Bookshop by Evie Woods
 Women of all ages read a mix of genres.
 Leader Karen: khelmle@bcpl.org

Books to Savor

Sunday, March 22
 Walton Branch, 2 p.m.

Big Little Lies by Liane Moriarty
 Read culinary-inspired novels and share recipes.
 Leader Gabi: grichardson@bcpl.org

Monday 4 Mystery

Monday, March 23
 Florence Branch, 6:30 p.m.

The Safe Place by Anna Downes
 Explore mystery and suspense novels.
 Leader Kevin: kwadlow@bcpl.org

Books Amongst Birds

Wednesday, March 25
 Hebron Branch, 6 p.m.

Birdwatch and discuss your latest read.
 Leader Vicki: vdurham@bcpl.org

ADULT new releases

The Tree of Light and Flowers
 Thomas Perry

Missing Sister
 Joshilyn Jackson

Lake Effect
 Cynthia D'Aprix Sweeney

The Bookstore Diaries
 Susan Mallery

Felicia's Favorites
 Danielle Steel

The Half-Hearted Queen
 Charlie N. Holmberg

Judge Stone
 James Patterson

Served Him Right
 Lisa Unger

A Day of Judgment
 Charles Todd

Once and Again
 Rebecca Serle

Life: A Love Story
 Elizabeth Berg

Bloodlust
 Sandra Brown



Mobile Apps

BCPL App

Download the BCPL app from Apple's App Store or Google Play to search for items, manage your account, browse Library events and more.



Libby

Download the Libby app to access our expansive Kentucky Libraries Unbound digital collection and more.



Buy the Book

Buy the Book sells used books, movies, music and more at bargain prices! It is located on the first floor at the Main Library in Burlington and is open during library hours.

Buy the Book

SIX locations to serve you — one phone number: 859-342-BOOK (2665) www.bcpl.org #CheckOutBCPL

MAIN LIBRARY

1786 Burlington Pike, Burlington, KY 41005
Monday-Thursday 9am-9pm
Friday 9am-6pm
Saturday 9am-5pm
Sunday 1-5pm

HEBRON BRANCH

1863 North Bend Rd, Hebron, KY 41048
Monday-Thursday 9am-8pm
Friday 9am-6pm
Saturday 9am-5pm
Sunday 1-5pm

FLORENCE BRANCH

7425 US 42, Florence, KY 41042
Monday-Thursday 9am-8pm
Friday 9am-6pm
Saturday 9am-5pm

SCHEBEN BRANCH

8899 US 42, Union, KY 41091
Monday-Thursday 9am-8pm
Friday 9am-6pm
Saturday 9am-5pm
Sunday 1-5pm

WALTON BRANCH

13000 Towne Center Dr, Walton, KY 41094
Monday-Thursday 9am-8pm
Friday 9am-6pm
Saturday 9am-5pm
Sunday 1-5pm

CHAPIN MEMORIAL LIBRARY

6517 Market Street, Petersburg, KY 41080
Monday-Thursday 11am-7pm
Friday 10am-6pm
Saturday 10am-5pm

STAFF AVAILABLE:

Tuesday & Wednesday 2-7pm
Thursday 1-7pm

Meet the Branch Managers

Kaitlin Barber, Hebron Branch

I grew up in Boone County, as did my parents and grandparents—and even some great-grandparents. If my family tree isn't rooted in Boone County, it stretches into other Kentucky counties, going back several generations. Do some of the limbs intertwine? I'll leave you to speculate. Am I related to you? Probably, if you're from Kentucky.

I began working at BCPL in 2011. While at NKU pursuing an MA in Public History, I found a job posting for a Digitization Intern in my inbox. As a Boone County girl, I was thrilled to see an opportunity to do history at home. Over the course of seven years, I held three positions in what was then called the Local History Department—Digitization Intern, Local History Associate, and eventually Local History Librarian after graduating from the University of Alabama with a Master's in Information and Library Studies. I later moved to Outreach as the Adult Outreach Librarian, delivering books to homebound patrons and presenting programs in skilled care and assisted living

facilities. My time in both departments was extremely rewarding. I met so many wonderful members of the community, heard their stories, and felt like a problem solver - which is one of my favorite things to be!

In July 2025, I took on a new role as Hebron Branch Manager. In January 2026, I began managing the Chapin Memorial Library in Petersburg, as well. I've enjoyed getting to know the staff and patrons at both locations and look forward to the future in this role.

